



Special Features

- Compact design
- High ranges
- Weatherproof (optional)
- Best suitable for OEM

Applications

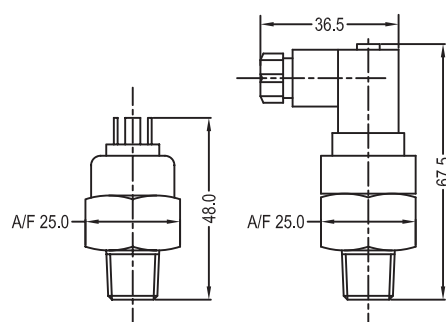
- Hydraulic & pneumatic equipments
- Automobiles & earth movers

Specifications

Standard Version

Repeatability	: $\pm 2\%$ F. S.
Sensing element	: Piston actuated diaphragm
Sensing element material	: Neoprene
Process connection & body material	: 1/4" BSP (M) of SS
Overpressure Limit	: 130% of F.S.
Switch	: 1 SPST (1 NO contact only)
Switch rating	: 5A @ 250 VAC / 24 VDC
Electrical terminals	: Spade terminals
Differential	: 10% to 20% of the F.S.
Maximum process temperature	: 100°C
Ambient temperature	: -10 to 60°C

Dimensional Details



Notes : • Drawings are not to scale. • All Dimensions are in mm.

How To Order

Basic model

Range

Ordering Code	Range (bar)	Differential (bar)	Range (bar)
10	1 to 10	40	5 to 70
20	2 to 30	50	10 to 100
30	4 to 50		

Body Material

R	Stainless steel (standard)	S	AISI 316 SS	L	AISI 316L SS
---	----------------------------	---	-------------	---	--------------

Sensing Element

N	Neoprene (Standard)	S	AISI 316 SS	T	TEFLON
---	---------------------	---	-------------	---	--------

Process Connection

1BM	1/8" BSP (M)	1NM	1/8" NPT (M)	2BM	1/4" BSP (M) (Standard)	2NM	1/4" NPT (M)
-----	--------------	-----	--------------	-----	-------------------------	-----	--------------

Options

F1	Extension cable - 1 Meter	F2	Extension cable - 2 Meters	DN	DIN Connector with IP 65
----	---------------------------	----	----------------------------	----	--------------------------

Example

XX
OR
XXX

X

X

XXX

XX

Note : Specifications and dimensions given in this product catalogue represents the state of engineering at the time of printing.
Modifications may take place and materials specified may be replaced by others without prior notice.



Special Features

- High accuracy & repeatability
- SS wetted parts
- Set point locking
- Highly reliable
- Diaphragm seals (optional)

Applications

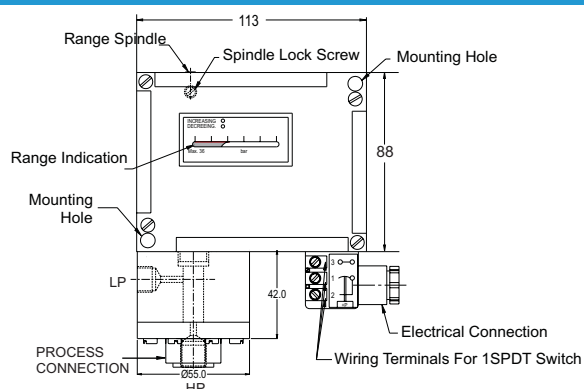
- Filter monitoring, boiler, furnace, railway engines
- Oil & gas, conventional & nuclear power plants, mines, iron & steel plants, refineries, petrochemical, food & pharmaceutical, chemical & fertilizer, cement, textile, pumps, glass, paint, pulp & paper, marine industries.

Specifications

Standard Version

Repeatability	:	± 0.5% F. S.
Scale unit	:	bar
Range	:	Refer "how to order"
Set point	:	Between 20 to 80% F. S. for better performance
Overpressure limit	:	150% of F. S.
Differential	:	Fixed
Mounting	:	Direct / Panel
Process connection	:	1/4" NPT (F)
Enclosure protection	:	W/P to IP 66
Enclosure material	:	Pressure die cast aluminum
Maximum process temperature	:	150 °C
Ambient temperature	:	-10 to 60 °C
Switch	:	1 SPDT, snap action micro switch
Switch rating	:	15 A, 250 VAC, 0.2 A, 220 VDC
High voltage strength	:	0.5 to 0.6 KV between open contacts and 2 KV between contacts and body
Insulation resistance	:	>100 M ohms at 500 V
Sensing element	:	Piston actuated diaphragm
DP chamber material	:	Aluminum (for range 5 to 600 mbar)
	:	AISI 316 SS (for range 3 to 20 mbar & 1 to 25 bar)
Sensing element material	:	AISI 316L SS
Cable gland	:	PG 13.5 mm
Scale Accuracy	:	± 1.0% F. S.
Conformity	:	BS 6134

Dimensional Details



Notes : • Drawings are not to scale. • All Dimensions are in mm.

How To Order Example

Basic Model

Range (* Also available in AISI 316 SS & AISI 316L version. Refer DP chamber material)

Ordering Code	Range (mbar)	DP Chamber Material	Ordering Code	Range (bar)	DP Chamber Material
W020	3 to 20	AISI 316 SS	P001	0.1 to 1	AISI 316 SS
W060	5 to 60	Aluminum*	P002	0.2 to 2	AISI 316 SS
W100	10 to 100	Aluminum*	P004	0.4 to 4	AISI 316 SS
W250	25 to 250	Aluminum*	P006	0.6 to 6	AISI 316 SS
W400	40 to 400	Aluminum*	P010	1 to 10	AISI 316 SS
W600	60 to 600	Aluminum*	P016	1 to 16	AISI 316 SS
			P025	2 to 25	AISI 316 SS

Note : Other equivalent scale units like kg/cm², kPa, MPa, psi, mmWC etc can be provided on request.

DP Chamber Material

AL ALUMINUM (Standard for Range 5 to 600 mbar only) **SL** AISI 316L SS

C6 AISI 316 SS (Standard for Range 3 to 20 mbar & 1 to 25 bar only)

Sensing Element Material

SL AISI 316L SS (Standard)

Differential

F Fixed (Standard)

Note : 1 SPDT = 3 to 5% FS

2 SPDT = 4.5 to 7.5% FS

1 DPDT = 4.5 to 7.5% FS

Type of Micro Switch

1S 1 SPDT **2S** 2 SPDT **1D** 1 DPDT

Micro Switch Rating

Switch Code	Description	AC Rating	AC Rating (Resistive)	DC Rating (Inductive)	Available on 1 SPDT	Available on 2 SPDT
GPL	Low dead band and fixed	15 A 250 V	2 A 24 V 0.4 A 110 V 0.2 A 220 V	2 A 24 V 0.4 A 110 V 0.2 A 220 V	Fixed differential of ZDD	Fixed differential of ZDD
GPH	Standard dead band	15 A 250 V	6 A 24V 0.5 A 110 V 0.25 A 220 V	5 A 24 V 0.05 A 110 V 0.03 A 220 V	Fixed differential of ZDD	Fixed differential of ZDD
GPA	Adj. differential micro switch	15 A 250 V			Adj. differential of of ZDD	NA
GPG	Gold plated contact	1 A 125 V	0.5 A 28 V		Fixed differential of ZDD	Fixed differential of ZDD
SES	Environmentally sealed silver contact	15 A 250 V	0.4 A 125 V		Fixed differential of ZDD	Fixed differential of ZDD
SEG	Environmentally sealed silver contact		1 A 28 V		Fixed differential of ZDD	Fixed differential of ZDD
HSS	Hermetically sealed silver plated	4 A 230 V	3 A 28 V	2 A 24 V	Fixed differential of ZDD	Fixed differential of ZDD
HSG	Hermetically sealed gold plated	1 A 125 V	NA	NA	Fixed differential of ZDD	Fixed differential of ZDD
HDC	High DC rating	10 A 125 V	10 A 125 V	6 A 125 V	Fixed differential of ZDD	Fixed differential of ZDD
DPD	DPDT Micro switch	10 A 125 V	0.2 A 250 V		Fixed & adjustable differential of ZDD	NA

How To Order										Example	
Calibration										X	
I	Increasing		D	Decreasing							
Process Connections (* Please mention the flange face and flange finish)											
			Through adaptors		Flanged (As per ANSI B 16.5)*					XXX	
2NM	1/4" NPT (M)		3BM	3/8" BSP (M)	B09	½" 150 #	B21	1" 150 #	B39		2" 150 #
2NF	1/4" NPT (F) (Standard)		3BF	3/8" BSP (F)	B10	½" 300 #	B22	1" 300 #	B40		2" 300 #
			4BM	½" BSP (M)	B11	½" 600 #	B23	1" 600 #	B41		2" 600 #
			4BF	½" BSP (F)	B15	¾" 150 #	B33	1 ½" 150 #	B51		3" 150 #
			4NM	½" NPT (M)	B16	¾" 300 #	B34	1 ½" 300 #	B52		3" 300 #
			4NF	½" NPT (F)	B17	¾" 600 #	B35	1 ½" 600 #	B53		3" 600 #
Cable Entry										XXX	
DIN	DIN Connection*		ETE	¾" ET		ECB	¾" ET DCCG Brass		4PN		4 PIN Connection*
PGE	PG 13.5 (Std)		2NP	½" NPT (F)		NPB	½"NPT DCCG Brass		7PN		7 PIN Connection
ECS	¾" ET DCCG SS		NPS	½"NPT DCCG SS							
* For 1 SPDT											
Options										XX	
PW	Calibration certificate				WM	Wall mounting bracket (steel plated)					
SX	SS Tag plate				PM	2" Pipe mounting					
TF	Conformity as per NACE Standard				JU	2" Pipe/yoke mounting bracket & 'U' clamp (AISI 304 SS)					
GH	Material test certificates***				FN	2" Pipe/yoke mounting bracket & 'U' clamp (AISI 316 SS)					
SG	Oxygen service				PU	Calibration certificate traceable to national / international standards					
Accessories (refer individual datasheet for complete specifications)											
EB	Cooling tower		ED	Overload protector		EG	Snubber				
EC	Gauge cock		NV4	Needle valve		EH	Syphon				
DS	Diaphragm seals		EL	Cooling capillary		VM	Manifolds				

***Material test certificates will be provided for wetted parts only with chemical chemical composition testing.
For others, please consult factory.

Note : In 2 SPDT Instruments, there may be an error of max $\pm 2\%$ F. S. between Micro Switches at the set point.



- High accuracy & repeatability
- SS wetted parts
- Set point locking
- Highly reliable
- Diaphragm seals (optional)

- Filter monitoring, boiler, furnace, railway engines
- Oil & gas, conventional & nuclear power plants, mines, iron & steel plants, refineries, petrochemical, food & pharmaceutical, chemical & fertilizer, cement, textile, pumps, glass, paint, pulp & paper, marine industries.

Repeatability	:	± 0.5% F. S.
Scale unit	:	bar (inside enclosure)
Range	:	Refer “how to order”
Set point	:	Between 20 to 80% F. S. for better performance
Overpressure limit	:	150% of F. S.
Differential	:	Fixed
Mounting	:	Direct / Panel
Process connection	:	1/4" NPT (F)
Enclosure protection	:	W/P to IP 65 & Explosion proof, Class 1, Div. 2, Gas Groups B, C & D (ExII2G, Eex d IIC T6)
Enclosure material	:	Die cast aluminum
Maximum process temperature	:	150 °C
Ambient temperature	:	-10 to 60 °C
Switch	:	1 SPDT, snap action micro switch
Switch rating	:	15 A, 250 VAC, 0.2 A, 220 VDC
High voltage strength	:	0.5 to 0.6 KV between open contacts and 2 KV between contacts and body
Insulation resistance	:	>100 M ohms at 500 V
Sensing element	:	Piston actuated diaphragm
DP chamber material	:	Aluminum (for range 5 to 600 mbar) AISI 316 SS (for range 3 to 20 mbar & 1 to 25 bar)
Sensing element material	:	AISI 316L SS
Cable gland	:	½"NPT (M) double compression
Scale Accuracy	:	± 1.0% F. S.
Conformity	:	BS 6134

Technical drawing of the HP-1000 process connection. The drawing includes the following views and dimensions:

- Top View:** Shows a circular flange with a diameter of $\varnothing 120.0$ SQ. The mounting holes are spaced at $\varnothing 85.0$. The range setting is indicated by a dashed line.
- Side View:** Shows the profile of the connection with a total height of 126. The earthing connection is shown on the right side.
- Detail View (Bottom Left):** Shows the cover locking screw (LP) and the process connection (HP) with a diameter of $\varnothing 55.0$. The cover locking screw is 42.0 units long.
- Detail View (Bottom Right):** Shows the cover locking screw (LP) and the process connection (HP) with a diameter of $\varnothing 55.0$. The cover locking screw is 42.0 units long.

01-10-13 Design and specifications subject to change without notice

How To Order

Example

Basic Model

Range (* Also available in AISI 316 SS & AISI 316L version. Refer DP chamber material)

Ordering Code	Range (mbar)	DP Chamber Material	Ordering Code	Range (bar)	DP Chamber Material
W020	3 to 20	AISI 316 SS	P001	0.1 to 1	AISI 316 SS
W060	5 to 60	Aluminum*	P002	0.2 to 2	AISI 316 SS
W100	10 to 100	Aluminum*	P004	0.4 to 4	AISI 316 SS
W250	25 to 250	Aluminum*	P006	0.6 to 6	AISI 316 SS
W400	40 to 400	Aluminum*	P010	1 to 10	AISI 316 SS
W600	60 to 600	Aluminum*	P016	1 to 16	AISI 316 SS
			P025	2 to 25	AISI 316 SS

Note : Other equivalent scale units like kg/cm², kPa, MPa, psi, mmWC etc can be provided on request.

DP Chamber Material

AL	Aluminum (Standard for range 5 to 600 mbar only)	SL	AISI 316L SS
C6	AISI 316 SS (Standard for range 3 to 20 mbar & 1 to 25 bar only)		

Sensing Element Material

SL	AISI 316L SS (Standard)
----	-------------------------

Differential

F	Fixed (Standard)
---	------------------

Note : 1 SPDT = 3 to 5% FS
2 SPDT = 4.5 to 7.5% FS
1 DPDT = 4.5 to 7.5% FS

Type of Micro Switch

1S	1 SPDT	2S	2 SPDT	1D	1 DPDT
----	--------	----	--------	----	--------

Micro Switch Rating

Switch Code	Description	AC Rating	AC Rating (Resistive)	DC Rating (Inductive)	Available on 1 SPDT	Available on 2 SPDT
GPL	Low dead band and fixed	15 A 250 V	2 A 24 V 0.4 A 110 V 0.2 A 220 V	2 A 24 V 0.4 A 110 V 0.2 A 220 V	Fixed differential of ZDD	Fixed differential of ZDD
GPH	Standard dead band	15 A 250 V	6 A 24V 0.5 A 110 V 0.25 A 220 V	5 A 24 V 0.05 A 110 V 0.03 A 220 V	Fixed differential of ZDD	Fixed differential of ZDD
GPA	Adj. differential micro switch	15 A 250 V			Adj. differential of ZDD	NA
GPG	Gold plated contact	1 A 125 V	0.5 A 28 V		Fixed differential of ZDD	Fixed differential of ZDD
SES	Environmentally sealed silver contact	15 A 250 V	0.4 A 125 V		Fixed differential of ZDD	Fixed differential of ZDD
SEG	Environmentally sealed silver contact		1 A 28 V		Fixed differential of ZDD	Fixed differential of ZDD
HSS	Hermetically sealed silver plated	4 A 230 V	3 A 28 V	2 A 24 V	Fixed differential of ZDD	Fixed differential of ZDD
HSG	Hermetically sealed gold plated	1 A 125 V	NA	NA	Fixed differential of ZDD	Fixed differential of ZDD
HDC	High DC rating	10 A 125 V	10 A 125 V	6 A 125 V	Fixed differential of ZDD	Fixed differential of ZDD
DPD	DPDT Micro switch	10 A 125 V	0.2 A 250 V		Fixed & adjustable differential of ZDD	NA

How To Order										Example					
Calibration										X					
I	Increasing		D	Decreasing											
Process Connections (* Please mention the flange face and flange finish)										XXX					
			Through Adaptors			Flanged (As per ANSI B 16.5)*									
2NM	1/4" NPT (M)		3BM	3/8" BSP (M)		B09	1/2" 150 #		B21		1" 150 #		B39	2" 150 #	
2NF	1/4" NPT (F) (Standard)		3BF	3/8" BSP (F)		B10	1/2" 300 #		B22		1" 300 #		B40	2" 300 #	
			4BM	1/2" BSP (M)		B11	1/2" 600 #		B23		1" 600 #		B41	2" 600 #	
			4BF	1/2" BSP (F)		B15	3/4" 150 #		B33		1 1/2" 150 #		B51	3" 150 #	
			4NM	1/2" NPT (M)		B16	3/4" 300 #		B34		1 1/2" 300 #		B52	3" 300 #	
			4NF	1/2" NPT (F)		B17	3/4" 600 #		B35		1 1/2" 600 #		B53	3" 600 #	
Cable Entry										XXX					
DTE	3/4" ET duel entry with one entry plugged			ECB	3/4" ET DCCG brass			DCS	3/4" ET DCCG with one entry plugged						
DNP	1/2" NPT (F) with one entry plugged			NPB	1/2"NPT DCCG brass			DPS	1/2" NPT DCCG with one entry plugged						
ECS	3/4" ET DCCG SS			ETE	3/4" ET			2NP	1/2" NPT (F)						
								NPS	1/2"NPT DCCG SS						
Options										XXX					
PW	Calibration certificate			WM	Wall mounting bracket (steel plated)										
SX	SS Tag plate			PM	2" Pipe mounting										
TF	Conformity as per NACE Standard			JU	2" Pipe/yoke mounting bracket & 'U' Clamp (AISI 304 SS)										
GH	Material test certificates***			FN	2" Pipe/yoke mounting bracket & 'U' Clamp (AISI 316 SS)										
SG	Oxygen service			PU	Calibration certificate traceable to national / international standards										
Accessories (refer individual datasheet for complete specifications)										XX					
EB	Cooling tower		ED	Over load protector			EG	Snubber							
EC	Gauge cock		NV4	Needle valve			EH	Syphon							
DS	Diaphragm seals		EL	Cooling capillary			VM	Manifolds							

***Material test certificates will be provided for wetted parts only with chemical composition testing.
For others, please consult factory.

Note : In 2 SPDT Instruments, there may be an error of max $\pm 2\%$ F. S. between Micro Switches at the set point.



Special Features

- High accuracy & repeatability
- SS wetted parts
- Set point locking
- Highly reliable
- Diaphragm seals (optional)

Applications

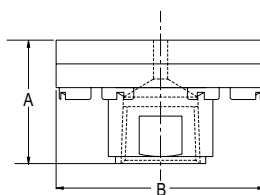
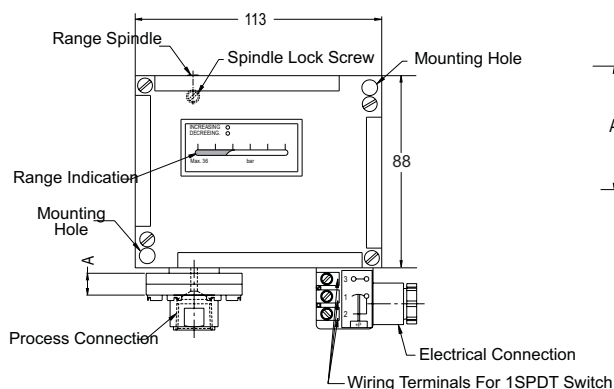
- Boiler, furnace, railway engines.
- Oil & gas, conventional & nuclear power plants, mines, iron & steel plants, refineries, petrochemical, food & pharmaceutical, chemical & fertilizer, cement, textile, glass, paint, pulp & paper, marine industries.

Specifications

Standard Version

Repeatability	:	± 0.5% F. S.
Scale unit	:	bar
Range	:	Refer "how to order"
Set point	:	Between 20 to 80% F. S. for better performance
Over pressure limit	:	150% of F. S.
Differential	:	Fixed
Mounting	:	Bottom / Panel
Process connection	:	1/4" NPT (F)
Enclosure protection	:	W/P to IP 66
Enclosure material	:	Pressure die cast aluminum
Maximum process temperature	:	150 °C
Ambient temperature	:	-10 to 60 °C
Switch	:	1 SPDT, snap action micro switch
Switch rating	:	15 A, 250 VAC, 0.2 A, 220 VDC
High voltage strength	:	0.5 to 0.6 KV between open contacts and 2 KV between contacts and body
Insulation resistance	:	>100 M ohms at 500 V
Sensing element	:	Piston actuated diaphragm
Other wetted parts	:	AISI 316 SS
Sensing element material	:	AISI 316L SS
Cable entry	:	PG 13.5 mm
Scale Accuracy	:	± 1.0% F. S.
Conformity	:	BS 6134

Dimensional Details



Range	A	B
-20 to 100 mbar	28	100
250 to 600 mbar	28	80
-1 to 2 bar	28	55
0 to 16 bar	28	44
2 to 40 bar	28	40
-1 to 4 bar	28	44

Notes :

- Drawings are not to scale.
- All Dimensions are in mm.

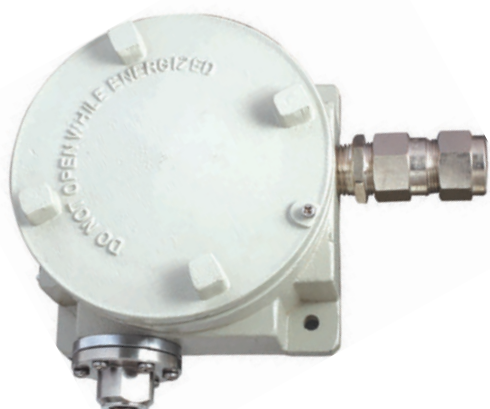
How To Order										Example
Basic Model										XXXX
Range										
Ordering Code	Range (mbar)	Ordering Code	Range (mbar)	Ordering Code	Range (bar)	Ordering Code	Range (bar)	Ordering Code	Range (bar)	
WC20	-20 to 20	W060	5 to 60	P001	0.1 to 1	P016	1 to 16	C005	-0.5 to 0.5	
WC40	-40 to 40	W100	10 to 100	P002	0.2 to 2	P025	2 to 25	C011	-1 to 1	
WC01	-1 to 2	W250	25 to 250	P004	0.4 to 4	P032	2 to 32	C012	-1 to 2	
W005	0.5 to 5	W400	40 to 400	P006	0.6 to 6	P040	2 to 40	C014	-1 to 4	
W020	3 to 20	W600	60 to 600	P010	1 to 10			V001	-1 to 0	
Note : Other equivalent scale units like kg/cm ² , kPa, MPa, psi, mmWC etc can be provided on request.										XX
Chamber Material										
C6	AISI 316 SS (Standard)		MO	Monel	AL		Aluminum*			
SL	AISI 316L SS		HC	Hastelloy C	(*Ranges 5 mbar to 600 mbar only)					
Sensing Element Material										XX
SL	AISI 316L SS (Standard)		BN	BUNA	HC		HASTELLOY C			
VT	VITON		TF	TEFLON	MO		MONEL			
Differential										X
F	Fixed (standard)		A	Adjustable						
Note :			Note :							
Fixed : 1 SDDT = 3 to 5% F.S. 2 SPDT = 4.5 to 7.5% F.S. 1 DPDT = 4.5 to 7.5% F.S.			Adjustable : 1 SPDT = 5 to 12.5% F.S. 2 SPDT = 7.5 to 19% F.S. 1 DPDT = 7.5 to 19% F.S.							
Type of Micro Switch										XX
1S	1 SPDT		2S	2 SPDT		1D	1 DPDT			
Micro Switch Rating										XXX
Switch Code	Description		AC Rating	AC Rating (Resistive)	DC Rating (Inductive)	Available on 1 SPDT		Available on 2 SPDT		
GPL	Low dead band and fixed		15 A 250 V	2 A 24 V 0.4 A 110 V 0.2 A 220 V	2 A 24 V 0.4 A 110 V 0.2 A 220 V	Fixed differential of ZPD		Fixed differential of ZPD		
GPH	Standard dead band		15 A 250 V	6 A 24V 0.5 A 110 V 0.25 A 220 V	5 A 24 V 0.05 A 110 V 0.03 A 220 V	Fixed differential of ZPD		Fixed differential of ZPD		
GPA	Adj. differential micro switch		15 A 250 V			Adj. differential of ZPD		Adjustable differential of ZPD		
GPG	Gold plated contact		1 A 125 V	0.5 A 28 V		Fixed differential of ZPD		Fixed differential of ZPD		
SES	Environmentally sealed silver contact		15 A 250 V	0.4 A 125 V		Fixed differential of ZPD		Fixed differential of ZPD		
SEG	Environmentally sealed silver contact			1 A 28 V		Fixed differential of ZPD		Fixed differential of ZPD		
HSS	Hermetically sealed silver plated		4 A 230 V	3 A 28 V	2 A 24 V	Fixed differential of ZPD		Fixed differential of ZPD		
HSG	Hermetically sealed gold plated		1 A 125 V	NA	NA	Fixed differential of ZPD		Fixed differential of ZPD		
HDC	High DC rating		10 A 125 V	10 A 125 V	6 A 125 V	Fixed differential of ZPD		Fixed differential of ZPD		
DPD	DPDT Micro switch		10 A 125 V	0.2 A 250 V		Fixed & adjustable differential of ZPD		NA		

How To Order										Example					
Calibration										X					
I	Increasing		D	Decreasing											
Process Connections (* Please mention the flange face and flange finish)															
			Through Adaptors		Flanged (As per ANSI B 16.5)*					XXX					
2NM	1/4" NPT (M)		3BM	3/8" BSP (M)		B09	1/2" 150 #		B21		1" 150 #		B39	2" 150 #	
2NF	1/4" NPT (F) (Standard)		3BF	3/8" BSP (F)		B10	1/2" 300 #		B22		1" 300 #		B40	2" 300 #	
			4BM	1/2" BSP (M)		B11	1/2" 600 #		B23		1" 600 #		B41	2" 600 #	
			4BF	1/2" BSP (F)		B15	3/4" 150 #		B33		1 1/2" 150 #		B51	3" 150 #	
			4NM	1/2" NPT (M)		B16	3/4" 300 #		B34		1 1/2" 300 #		B52	3" 300 #	
			4NF	1/2" NPT (F)		B17	3/4" 600 #		B35		1 1/2" 600 #		B53	3" 600 #	
Cable Entry										XXX					
DIN	DIN Connection*		ETE	3/4" ET		ECB	3/4" ET DCCG Brass		4PN		4 PIN Connection*				
PGE	PG 13.5 (Std)		2NP	1/2" NPT (F)		NPB	1/2"NPT DCCG Brass		7PN		7 PIN Connection				
ECS	3/4" ET DCCG SS		NPS	1/2"NPT DCCG SS											
* For 1 SPDT															
Options										XX					
PW	Calibration certificate					WM	Wall mounting bracket (steel plated)								
SX	SS Tag plate					PM	2" Pipe mounting								
TF	Conformity as per NACE Standard					JU	2" Pipe/yoke mounting bracket & 'U' clamp (AISI 304 SS)								
GH	Material test certificates***					FN	2" Pipe/yoke mounting bracket & 'U' clamp (AISI 316 SS)								
SG	Oxygen service														
PU	Calibration certificate traceable to national/international standards														
Accessories (Refer individual datasheet for complete specifications)															
EB	Cooling tower		ED	Overload protector		EG	Snubber								
EC	Gauge cock		NV4	Needle valve		EH	Syphon								
DS	Diaphragm seals		EL	Cooling capillary		VM	Manifolds								

***Material test certificates will be provided for wetted parts only with chemical composition testing.
For others, please consult factory.

Note : In 2 SPDT Instruments, there may be an error of max $\pm 2\%$ F. S. between Micro Switches at the set point.
Use common note as per other data sheets like specification and dimensions given in this product catalogue

Note : Specifications and dimensions given in this product catalogue represents the state of engineering at the time of printing.
Modifications may take place and materials specified may be replaced by others without prior notice.



Special Features

- High accuracy & repeatability
- SS wetted parts
- Set point locking
- Highly reliable
- Diaphragm seals (optional)

Applications

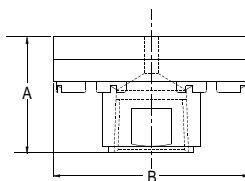
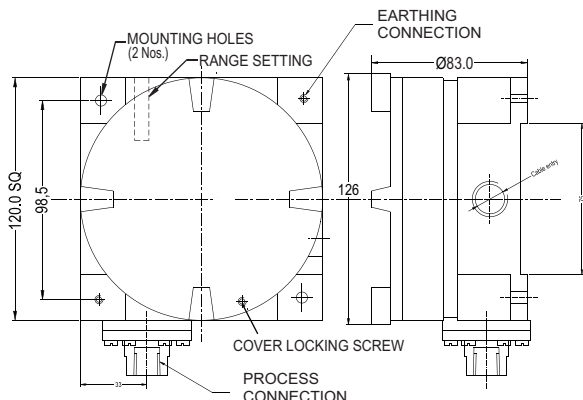
- Boiler, furnace
- Oil & gas, conventional & nuclear power
- Plants, mines, iron & steel plants, refineries,
- Petrochemical, food & pharmaceutical,
- Chemical & fertilizer, cement,
- Glass, paint, pulp & paper, marine industries and other hazardous applications

Specifications

Standard Version

Repeatability	:	± 0.5% F. S.
Scale Unit	:	bar (Inside Enclosure)
Range	:	Refer "how to order"
Set point	:	Between 20 to 80% F. S. for better performance
Over pressure limit	:	150% of F. S.
Differential	:	Fixed
Mounting	:	Bottom / Panel
Process connection	:	1/4" NPT (F)
Enclosure protection	:	W/P to IP 65 & Explosion proof, Class 1, Div. 2, Gas Groups B, C & D (ExII2G, Eex d IIC T6)
Enclosure material	:	Die cast aluminum
Maximum process temperature	:	150 °C
Ambient temperature	:	-10 to 60 °C
Switch	:	1 SPDT, snap action micro switch
Switch rating	:	15 A, 250 VAC, 0.2 A, 220 VDC
High voltage strength	:	0.5 to 0.6 KV between open contacts and 2 KV between contacts and body
Insulation resistance	:	>100 M ohms at 500 V
Sensing element	:	Piston actuated diaphragm
Chamber material	:	AISI 316 SS
Sensing element material	:	AISI 316L SS
Cable gland	:	1/2"NPT (M) double compression
Scale Accuracy	:	± 1.0% F. S.
Conformity	:	BS 6134

Dimensional Details



Range	A	B
-20 to 100 mbar	28	100
250 to 600 mbar	28	80
-1 to 2 bar	28	55
0 to 16 bar	28	44
2 to 40 bar	28	40
-1 to 4 bar	28	44

Notes : • Drawings are not to scale. • All dimensions are in mm.

How To Order										Example
Basic Model										XXXX
Range										
Ordering Code	Range (mbar)	Ordering Code	Range (mbar)	Ordering Code	Range (bar)	Ordering Code	Range (bar)	Ordering Code	Range (bar)	
WC20	-20 to 20	W060	5 to 60	P001	0.1 to 1	P016	1 to 16	C005	-0.5 to 0.5	
WC40	-40 to 40	W100	10 to 100	P002	0.2 to 2	P025	2 to 25	C011	-1 to 1	
WC01	-1 to 2	W250	25 to 250	P004	0.4 to 4	P032	2 to 32	C012	-1 to 2	
W005	0.5 to 5	W400	40 to 400	P006	0.6 to 6	P040	2 to 40	C014	-1 to 4	
W020	3 to 20	W600	60 to 600	P010	1 to 10			V001	-1 to 0	
Note : Other equivalent scale units like kg/cm ² , kPa, MPa, psi, mmWC etc can be provided on request.										XX
Chamber Material										
C6	AISI 316 SS (standard)		MO	Monel		AL	Aluminum*			
SL	AISI 316L SS		HC	Hastelloy C		(*Ranges 5 mbar to 600 mbar only)				
Sensing Element Material										XX
SL	AISI 316L SS (standard)		BN	Buna		HC	Hastelloy C			
VT	Viton		TF	Teflon		MO	Monel			
Differential										X
F	Fixed (standard)		A	Adjustable						
Note : Fixed : 1 SPDT = 3 to 5% FS 2 SPDT = 4.5 to 7.5% FS 1 DPDT = 4.5 to 7.5% FS Adjustable : 1 SPDT = 5 to 12.5% FS 2 SPDT = 7.5 to 19% FS 1 DPDT = 7.5 to 19% FS										XX
Type of Micro Switch										
1S	1 SPDT		2S	2 SPDT		1D	1 DPDT			
Micro Switch Rating										XXX
Switch Code	Description	AC Rating	AC Rating (Resistive)	DC Rating (Inductive)	Available on 1 SPDT	Available on 2 SPDT				
GPL	Low dead band and fixed	15 A 250 V	2 A 24 V 0.4 A 110 V 0.2 A 220 V	2 A 24 V 0.4 A 110 V 0.2 A 220 V	Fixed differential of ZPD	Fixed differential of ZPD				
GPH	Standard dead band	15 A 250 V	6 A 24V 0.5 A 110 V 0.25 A 220 V	5 A 24 V 0.05 A 110 V 0.03 A 220 V	Fixed differential of ZPD	Fixed differential of ZPD				
GPA	Adj. differential micro switch	15 A 250 V			Adj. differential of of ZPD	NA				
GPG	Gold plated contact	1 A 125 V	0.5 A 28 V		Fixed differential of ZPD	Fixed differential of ZPD				
SES	Environmentally sealed silver contact	15 A 250 V	0.4 A 125 V		Fixed differential of ZPD	Fixed differential of ZPD				
SEG	Environmentally sealed silver contact		1 A 28 V		Fixed differential of ZPD	Fixed differential of ZPD				
HSS	Hermetically sealed silver plated	4 A 230 V	3 A 28 V	2 A 24 V	Fixed differential of ZPD	Fixed differential of ZPD				
HSG	Hermetically sealed gold plated	1 A 125 V	NA	NA	Fixed differential of ZPD	Fixed differential of ZPD				
HDC	High DC rating	10 A 125 V	10 A 125 V	6 A 125 V	Fixed differential of ZPD	Fixed differential of ZPD				
DPD	DPDT Micro switch	10 A 125 V	0.2 A 250 V		Fixed & adjustable differential of ZPD	NA				

How To Order										Example					
Calibration										X					
I	Increasing		D	Decreasing											
Process Connections (* Please mention the flange face and flange finish)															
			Through Adaptors			Flanged (As per ANSI B 16.5)*				XXX					
2NM	1/4" NPT (M)		3BM	3/8" BSP (M)		B09	1/2" 150 #		B21		1" 150 #		B39	2" 150 #	
2NF	1/4" NPT (F) (Standard)		3BF	3/8" BSP (F)		B10	1/2" 300 #		B22		1" 300 #		B40	2" 300 #	
			4BM	1/2" BSP (M)		B11	1/2" 600 #		B23		1" 600 #		B41	2" 600 #	
			4BF	1/2" BSP (F)		B15	3/4" 150 #		B33		1 1/2" 150 #		B51	3" 150 #	
			4NM	1/2" NPT (M)		B16	3/4" 300 #		B34		1 1/2" 300 #		B52	3" 300 #	
			4NF	1/2" NPT (F)		B17	3/4" 600 #		B35		1 1/2" 600 #		B53	3" 600 #	
Cable Entry										XXX					
DTE	3/4" ET dual entry with one entry plugged			ECS	3/4" ET DCCG SS		DCS	3/4" ET DCCG with one entry plugged							
DNP	1/2" NPT (F) with one entry plugged			NPS	1/2"NPT DCCG SS		DPS	1/2" NPT DCCG with one entry plugged							
2NP	1/2" NPT (F)			ETE	3/4" ET		ECB	3/4" ET DCCG BRASS							
							NPB	1/2"NPT DCCG BRASS							
Options										XX					
PW	Calibration certificate			WM	Wall mounting bracket (steel plated)										
SX	SS Tag plate			PM	2" Pipe mounting										
TF	Conformity as per NACE Standard			JU	2" Pipe/yoke mounting bracket & 'U' clamp (AISI 304 SS)										
GH	Material test certificates***			FN	2" Pipe/yoke mounting bracket & 'U' clamp (AISI 316 SS)										
SG	Oxygen service			PU	Calibration certificate traceable to national / international standards										
Accessories (refer individual datasheet for complete specifications)															
EB	Cooling tower		ED	Overload protector		EG	Snubber								
EC	Gauge cock		NV4	Needle valve		EH	Syphon								
DS	Diaphragm seals		EL	Cooling capillary		VM	Manifolds								

***Material test certificates will be provided for wetted parts only with chemical composition testing.
For others, please consult factory.

Note : In 2 SPDT Instruments, there may be an error of max $\pm 2\%$ F. S. between micro switches at the set point.



Special Features

- High accuracy & repeatability
- SS wetted parts
- Set point locking
- Highly reliable
- Diaphragm seals (optional)

Applications

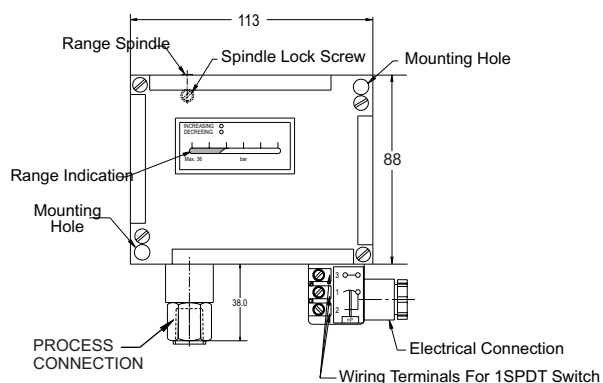
- Boiler, furnace, railway engines.
- Oil & gas, conventional & nuclear power plants, mines, iron & steel plants, refineries, petrochemical, hydraulics, food & pharmaceutical, chemical & fertilizer, cement, textile, glass, paint, pulp & paper, marine industries.

Specifications

Standard Version

Repeatability	:	± 1% F. S.
Scale Unit	:	bar
Range	:	Refer "how to order"
Set point	:	Between 20 to 80% F. S. for better performance
Over pressure limit	:	150% of F. S.
Differential	:	Fixed
Mounting	:	Bottom / Panel
Process connection	:	1/4" NPT (F)
Enclosure protection	:	W/P to IP 66
Enclosure material	:	Pressure die cast aluminum
Maximum process temperature	:	150 °C
Ambient temperature	:	-10 to 60 °C
Switch	:	1 SPDT, snap action micro switch
Switch rating	:	15 A, 250 VAC, 0.2 A, 220 VDC
High voltage strength	:	0.5 to 0.6 KV between open contacts and 2 KV between contacts and body
Insulation resistance	:	>100 M ohms at 500 V
Sensing element	:	Piston
Wetted parts	:	AISI 316 SS
Cable entry	:	PG 13.5 mm
Scale Accuracy	:	± 1.0% F. S.
Conformity	:	BS 6134

Dimensional Details



Notes : • Drawings are not to scale. • All dimensions are in mm.

How To Order						Example	
Basic Model						XXXX	
Range							
Ordering Code	Range (bar)	Ordering Code	Range (bar)	Ordering Code	Range (bar)		
PC60	5 to 60	P160	10 to 160	P400	40 to 400		
P100	10 to 100	P250	10 to 250	P600	60 to 600		
Note : Other equivalent scale units like kg/cm ² , kPa, MPa, psi, mmWC etc can be provided on request.							
Wetted Parts						XX	
C6	AISI 316 SS (standard)		SL	AISI 316L SS			
Differential						X	
F	Fixed (standard)						
Note :						XX	
Fixed : 1 SDDT = 3 to 5% F.S.							
2 SPDT = 4.5 to 7.5% F.S.							
1 DPDT = 4.5 to 7.5% F.S.							
Type of Micro Switch						XX	
1S	1 SPDT		2S	2 SPDT			1D
Micro Switch Rating						XXX	
Switch Code	Description	AC Rating	AC Rating (Resistive)	DC Rating (Inductive)	Available on 1 SPDT		Available on 2 SPDT
GPL	Low dead band and fixed	15 A 250 V	2 A 24 V 0.4 A 110 V 0.2 A 220 V	2 A 24 V 0.4 A 110 V 0.2 A 220 V	Fixed differential of ZPP		Fixed differential of ZPP
GPH	Standard dead band	15 A 250 V	6 A 24V 0.5 A 110 V 0.25 A 220 V	5 A 24 V 0.05 A 110 V 0.03 A 220 V	Fixed differential of ZPP		Fixed differential of ZPP
GPA	Adj. differential micro switch	15 A 250 V			Adj. differential of ZPP		NA
GPG	Gold plated contact	1 A 125 V	0.5 A 28 V		Fixed differential of ZPP		Fixed differential of ZPP
SES	Environmentally sealed silver contact	15 A 250 V	0.4 A 125 V		Fixed differential of ZPP		Fixed differential of ZPP
SEG	Environmentally sealed silver contact		1 A 28 V		Fixed differential of ZPP		Fixed differential of ZPP
HSS	Hermetically sealed silver plated	4 A 230 V	3 A 28 V	2 A 24 V	Fixed differential of ZPP		Fixed differential of ZPP
HSG	Hermetically sealed gold plated	1 A 125 V	NA	NA	Fixed differential of ZPP		Fixed differential of ZPP
HDC	High DC rating	10 A 125 V	10 A 125 V	6 A 125 V	Fixed differential of ZPP		Fixed differential of ZPP
DPD	DPDT Micro switch	10 A 125 V	0.2 A 250 V		Fixed & adjustable differential of ZPP		NA

How To Order										Example		
Calibration										X		
I	Increasing		D	Decreasing								
Process Connections (* Please mention the flange face and flange finish)												
			Through Adaptors			Flanged (As per ANSI B 16.5)*				XXX		
2NM	1/4" NPT (M)		3BM	3/8" BSP (M)		B09	1/2" 150 #	B21	1" 150 #		B39	2" 150 #
2NF	1/4" NPT (F) (Standard)		3BF	3/8" BSP (F)		B10	1/2" 300 #	B22	1" 300 #		B40	2" 300 #
			4BM	1/2" BSP (M)		B11	1/2" 600 #	B23	1" 600 #		B41	2" 600 #
			4BF	1/2" BSP (F)		B15	3/4" 150 #	B33	1 1/2" 150 #		B51	3" 150 #
			4NM	1/2" NPT (M)		B16	3/4" 300 #	B34	1 1/2" 300 #		B52	3" 300 #
			4NF	1/2" NPT (F)		B17	3/4" 600 #	B35	1 1/2" 600 #		B53	3" 600 #
Cable Entry												
DIN	DIN Connection*		ETE	3/4" ET		ECB	3/4" ET DCCG Brass		4PN	4 PIN Connection*		XXX
PGE	PG 13.5 (Std)		2NP	1/2" NPT (F)		NPB	1/2"NPT DCCG Brass		7PN	7 PIN Connection		
ECS	3/4" ET DCCG SS		NPS	1/2"NPT DCCG SS								
* For 1 SPDT												
Options												
PW	Calibration certificate					WM	Wall mounting bracket (steel plated)					XX
SX	SS Tag plate					PM	2" Pipe mounting					
GH	Material test certificates***					JU	2" Pipe/yoke mounting bracket & 'U' clamp (AISI 304 SS)					
SG	Oxygen service					FN	2" Pipe/yoke mounting bracket & 'U' clamp (AISI 316 SS)					
PU	Calibration certificate traceable to national/international standards											
Accessories (refer individual datasheet for complete specifications)												
EB	Cooling tower		ED	Overload protector		EG	Snubber					
EC	Gauge cock		NV4	Needle valve		EH	Syphon					
DS	Diaphragm seals		EL	Cooling capillary		VM	Manifolds					

***Material test certificates will be provided for wetted parts only with chemical composition testing.
For others, please consult factory.

Note : In 2 SPDT Instruments, there may be an error of max $\pm 2\%$ F. S. between micro switches at the set point.



Special Features

- High accuracy & repeatability
- SS wetted parts
- Set point locking
- Highly reliable
- Diaphragm seals (optional)

Applications

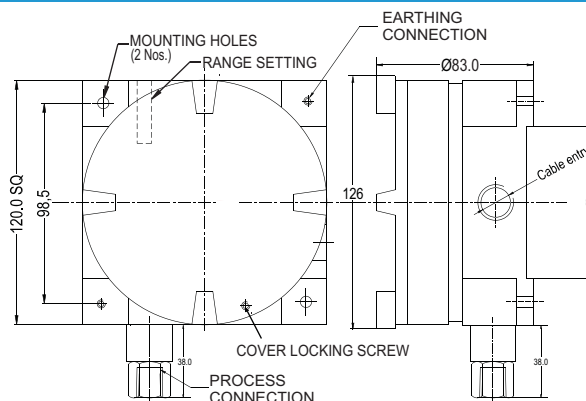
- Boiler, furnace
- Oil & gas, conventional & nuclear power plants, mines, iron & steel plants, refineries, petrochemical, hydraulic, food & pharmaceutical, chemical & fertilizer, cement, glass, paint, pulp & paper, marine industries and other hazardous applications.

Specifications

Standard Version

Repeatability	:	± 1% F. S.
Scale unit	:	bar (inside enclosure)
Range	:	Refer "how to order"
Set point	:	Between 20 to 80% F. S. for better performance
Over pressure limit	:	150% of F. S.
Differential	:	Fixed
Mounting	:	Bottom / Panel
Process connection	:	1/4" NPT (F)
Enclosure protection	:	W/P to IP 65 & Explosion proof, Class 1, Div. 2, Gas Groups B, C & D (ExII2G, Eex d IIC T6)
Enclosure material	:	Die cast aluminum
Maximum process temperature	:	150 °C
Ambient temperature	:	-10 to 60 °C
Switch	:	1 SPDT, snap action micro switch
Switch rating	:	15 A, 250 VAC, 0.2 A, 220 VDC
High voltage strength	:	0.5 to 0.6 KV between open contacts and 2 KV between contacts and body
Insulation resistance	:	>100 M ohms at 500 V
Sensing element	:	Piston
Wetted parts	:	AISI 316 SS
Cable gland	:	1/2"NPT (M) double compression
Scale Accuracy	:	± 1.0% F. S.
Conformity	:	BS 6134

Dimensional Details



Notes : • Drawings are not to scale. • All dimensions are in mm.

How To Order						Example	
Basic Model						XXXX	
Range							
Ordering Code	Range (bar)	Ordering Code	Range (bar)	Ordering Code	Range (bar)		
PC60	5 to 60	P160	10 to 160	P400	40 to 400		
P100	10 to 100	P250	10 to 250	P600	60 to 600		
Note : Other equivalent scale units like kg/cm ² , kPa, MPa, psi, mmWC etc can be provided on request.							
Wetted Parts						XX	
C6	AISI 316 SS (standard)		SL	AISI 316L SS			
Differential						X	
F	Fixed (standard)						
Note :						XX	
Fixed : 1 SDDT = 3 to 5% F.S.							
2 SPDT = 4.5 to 7.5% F.S.							
1 DPDT = 4.5 to 7.5% F.S.							
Type of Micro Switch						XX	
1S	1 SPDT		2S	2 SPDT			1D
Micro Switch Rating						XXX	
Switch Code	Description	AC Rating	AC Rating (Resistive)	DC Rating (Inductive)	Available on 1 SPDT		Available on 2 SPDT
GPL	Low dead band and fixed	15 A 250 V	2 A 24 V 0.4 A 110 V 0.2 A 220 V	2 A 24 V 0.4 A 110 V 0.2 A 220 V	Fixed differential of ZPP		Fixed differential of ZPP
GPH	Standard dead band	15 A 250 V	6 A 24V 0.5 A 110 V 0.25 A 220 V	5 A 24 V 0.05 A 110 V 0.03 A 220 V	Fixed differential of ZPP		Fixed differential of ZPP
GPA	Adj. differential micro switch	15 A 250 V			Adj. differential of ZPP		NA
GPG	Gold plated contact	1 A 125 V	0.5 A 28 V		Fixed differential of ZPP		Fixed differential of ZPP
SES	Environmentally sealed silver contact	15 A 250 V	0.4 A 125 V		Fixed differential of ZPP		Fixed differential of ZPP
SEG	Environmentally sealed silver contact		1 A 28 V		Fixed differential of ZPP		Fixed differential of ZPP
HSS	Hermetically sealed silver plated	4 A 230 V	3 A 28 V	2 A 24 V	Fixed differential of ZPP		Fixed differential of ZPP
HSG	Hermetically sealed gold plated	1 A 125 V	NA	NA	Fixed differential of ZPP		Fixed differential of ZPP
HDC	High DC rating	10 A 125 V	10 A 125 V	6 A 125 V	Fixed differential of ZPP		Fixed differential of ZPP
DPD	DPDT Micro switch	10 A 125 V	0.2 A 250 V		Fixed & adjustable differential of ZPP		NA

How To Order													Example			
Calibration																
I	Increasing			D	Decreasing									X		
Process Connections (* Please mention the flange face and flange finish)																
				Through Adaptors			Flanged (As per ANSI B 16.5)*							XXX		
2NM	1/4" NPT (M)			3BM	3/8" BSP (M)		B09	1/2" 150 #		B21	1" 150 #		B39		2" 150 #	
2NF	1/4" NPT (F) (Standard)			3BF	3/8" BSP (F)		B10	1/2" 300 #		B22	1" 300 #		B40		2" 300 #	
				4BM	1/2" BSP (M)		B11	1/2" 600 #		B23	1" 600 #		B41		2" 600 #	
				4BF	1/2" BSP (F)		B15	3/4" 150 #		B33	1 1/2" 150 #		B51		3" 150 #	
				4NM	1/2" NPT (M)		B16	3/4" 300 #		B34	1 1/2" 300 #		B52		3" 300 #	
				4NF	1/2" NPT (F)		B17	3/4" 600 #		B35	1 1/2" 600 #		B53	3" 600 #		XXX
Cable Entry																
DTE	3/4" ET duel entry with one entry plugged			ECB	3/4" ET DCCG brass		DCS	3/4" ET DCCG with one entry plugged							XXX	
DNP	1/2" NPT (F) with one entry plugged			NPB	1/2"NPT DCCG brass		DPS	1/2" NPT DCCG with one entry plugged								
ECS	3/4" ET DCCG SS			ETE	3/4" ET		2NP	1/2" NPT (F)								
											NPS	1/2"NPT DCCG SS				XX
Options																
PW	Calibration certificate			WM	Wall mounting bracket (steel plated)									XX		
SX	SS Tag plate			PM	2" Pipe mounting											
TF	Conformity as per NACE Standard			JU	2" Pipe/yoke mounting bracket & 'U' Clamp (AISI 304 SS)											
GH	Material test certificates***			FN	2" Pipe/yoke mounting bracket & 'U' Clamp (AISI 316 SS)											
SG	Oxygen service			PU	Calibration certificate traceable to national / international standards											
Accessories (refer individual datasheet for complete specifications)																
EB	Cooling tower			ED	Overload protector		EG	Snubber								
EC	Gauge cock			NV4	Needle valve		EH	Syphon								
DS	Diaphragm seals			EL	Cooling capillary		VM	Manifolds								

***Material test certificates will be provided for wetted parts only with chemical composition testing.
For others, please consult factory.

Note : In 2 SPDT Instruments, there may be an error of max $\pm 2\%$ F. S. between micro switches at the set point.

IP411 Adjustable Dead Band Pressure Switch Diaphragm Type



Special Features

- Fixed dead band (optional)
- Weatherproof to IP66
- Sleek & reliable
- Field adjustable
- High repeatability

Application

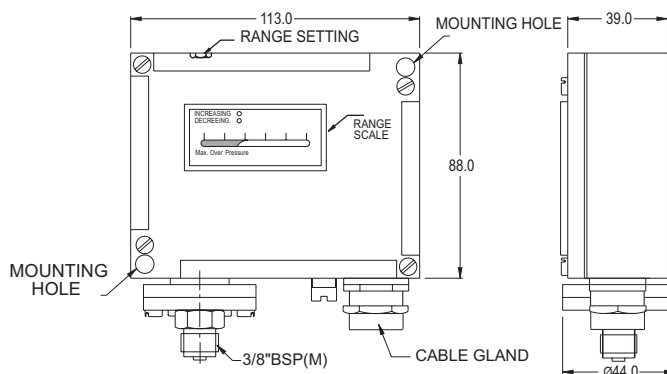
- Railways
- Compressors & boilers
- Water treatment
- Fire fighting systems
- Lubrication industries

Specifications

Standard Version

Repeatability	: ± 1% F. S.
Range	: Refer "how to order"
Mounting	: Bottom / Panel
Process connection	: 3/8" BSP (M)
Enclosure protection	: W/P to IP 66
Enclosure material	: Pressure die cast aluminum
Maximum process temperature	: 150 °C
Ambient temperature	: -10 to 60 °C
Switch	: 1 SPDT (adjustable)
Switch rating	: 15 A, 250 VAC & 0.4 A, 110 VDC
Sensing element	: Diaphragm, AISI 316L SS
Other wetted parts	: AISI 304 SS
Process medium	: Air, oil & water
Scale Accuracy	: ± 3.0% F. S.
Electrical connection	: PG 13.5 mm cable gland

Dimensional Details



Notes : • Drawings are not to scale. • All dimensions are in mm.

How To Order

Basic model

Range

Ordering code	Model no.	Range (bar)	Differential (bar)
VA	CNI - VAC	-1 to 0	0.1 to 0.50
WC	CNI - WC	0 to 300 cmWC	10 to 50 cmWC
1	CNI - 1	0.1 to 1.1	0.08 to 0.20
3	CNI - 3	0.4 to 4	0.08 to 0.30
6	CNI - 6	0.6 to 6	0.25 to 1.5
10	CNI - 10	1 to 10	0.3 to 1.3
16	CNI - 16	1 to 16	1 to 5
30	CNI - 30	2 to 32	1 to 5
40	CNI - 40	4 to 40	2 to 6

Calibration

I	Increasing	D	Decreasing (not applicable for adj. differential)
----------	------------	----------	---

Options

PW	Calibration certificate	4NM	½" NPT (M) adaptor	SX	SS Tag plate	DC	Double compression cable gland
1F	1 SPDT switch with fixed dead band	4NF	½" NPT (F) adaptor	WM	Wall mounting bracket		
2F	2 SPDT switch with fixed dead band	S6	Wetted parts AISI 316 SS	PM	2" Pipe mounting	SG	Oxygen service

Example

X
OR
XX

Note : Other equivalent scales units like kg/cm², kPa, MPa, psi, mmWC etc can be provided on request.

X

XX
OR
XXX

Note : Specifications and dimensions given in this product catalogue represents the state of engineering at the time of printing. Modifications may take place and materials specified may be replaced by others without prior notice.

IP412 Differential Pressure Switch Bellow Type (Industrial & Refrigeration)



Special Features

- Compact
- Economical
- Reliable
- Field adjustable
- Copper alloy wetted parts
- Auto reset

Applications

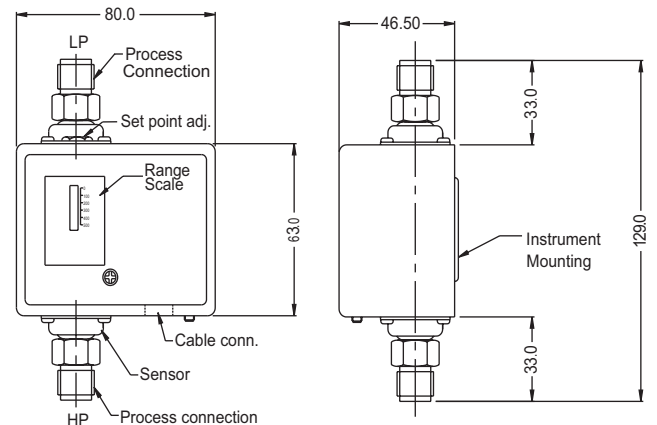
- Boilers
- Water treatment
- Fire fighting systems
- Lubrication industries
- Compressors / chillers

Specifications

Standard Version

Repeatability	: ± 2% F. S.
Accuracy	: ± 5% F. S.
Scale unit	: bar with psi
Range	: 0 to 4 bar / 58 psi
Differential	: Fixed
Mounting	: Direct / Panel
Mounting accessories	: Mounting bracket with screws
Process connection	: Refer "how to order"
Enclosure protection	: IP 32
Enclosure material	: Steel (plated) with plastic cover
Maximum process temperature	: 100 °C
Ambient temperature	: -10 to 60 °C
Switch	: 1 SPDT
Switch rating	: 15 A, 220 VAC & 10 A, 24 VDC
Sensing element	: Phosphor bronze bellows
Process medium	: Air, oil & water

Dimensional Details



Notes : • Drawings are not to scale. • All Dimensions are in mm.

How To Order

Basic model

Range

Ordering Code	Model No.	Range (bar)		Differential (bar)		Process Connection
		Min	Max	Min	Max	
IS	UDPR	0.5	4	-	0.4	3/8" BSP (M)
RA	UDPR	0.5	4	-	0.4	1/4" Flared

Options (* applicable for industrial switch only)

PW	Calibration certificate	SX	SS Tag plate	3NM	3/8" NPT (M)*
-----------	-------------------------	-----------	--------------	------------	---------------

Example

XX

XX

Note : Specifications and dimensions given in this product catalogue represents the state of engineering at the time of printing. Modifications may take place and materials specified may be replaced by others without prior notice.



Special Features

- Compact & economical
- Reliable
- Field adjustable
- Auto reset

Applications

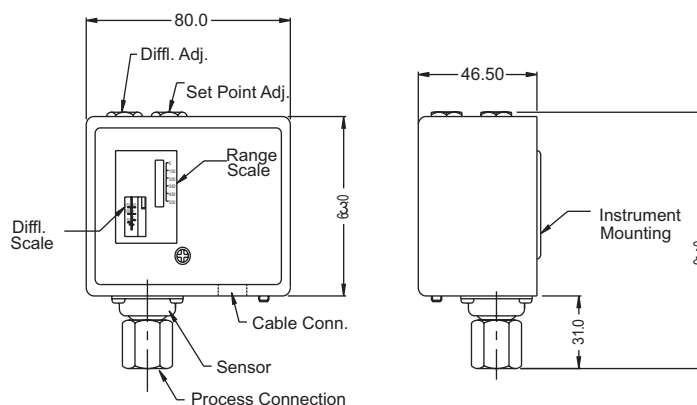
- Boilers
- Water treatment
- Fire fighting systems
- Compressors

Specifications

Standard Version

Repeatability	: $\pm 2\%$ F. S.
Accuracy	: $\pm 5\%$ F. S.
Scale unit	: bar with psi
Range	: Refer "How to order"
Differential	: Adjustable
Mounting	: Bottom / Panel
Mounting accessories	: Mounting bracket with screws
Process connection	: 1/4" BSP (F)
Enclosure protection	: IP 32
Enclosure material	: Steel (plated) with plastic cover
Maximum process temperature	: 100 °C
Ambient temperature	: -10 to 60 °C
Switch	: 1 SPDT
Switch rating	: 15 A, 220 VAC & 10 A, 24 VDC
Sensing element	: Phosphor bronze bellows
Process medium	: Air, oil & water

Dimensional Details



Notes : • Drawings are not to scale. • All Dimensions are in mm.

How To Order

Basic model

Range

Ordering Code	Model No.	Range (bar)		Differential (bar)	
		Min	Max	Min	Max
3	UT3	0	3	0.25	1.5
6	UT6	0	6	0.6	3
10	UT10	0	10	1	3
16	UT16	3	16	1	4
20	UT20	5	20	2	5
30	UT30	5	30	5	12

Options (* through adaptors)

PW	Calibration certificate	2NM	1/4" NPT (M)*	2NF	1/4" NPT (F)*	SX	SS Tag plate
----	-------------------------	-----	---------------	-----	---------------	----	--------------

Example

X
OR
XX

XX

Note : Specifications and dimensions given in this product catalogue represents the state of engineering at the time of printing. Modifications may take place and materials specified may be replaced by others without prior notice.

IP414 Single & Dual Pressure Switch Bellow Type (Refrigeration & Air Conditioning)



Special Features

- Manual & auto reset
- Compact
- Economical
- Reliable
- Field adjustable

Application

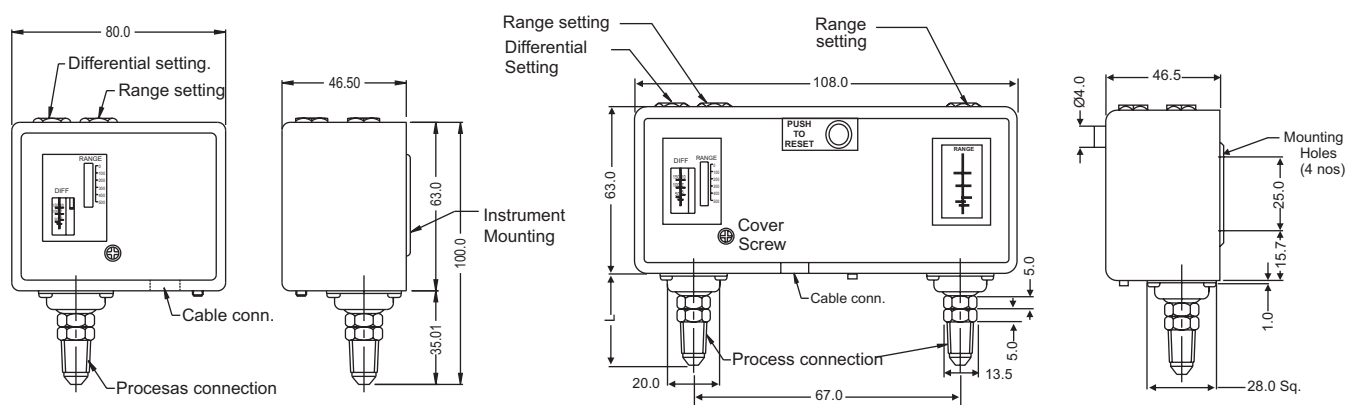
- Chiller units
- Compressors

Specifications

Standard Version

Repeatability	:	± 2% F. S.
Accuracy	:	± 5% F. S.
Scale unit	:	bar with psi
Range	:	Refer "how to order"
Differential	:	Adjustable for single & dual, fixed for dual (optional)
Mounting	:	Bottom / Panel
Mounting accessories	:	Mounting bracket with screws
Process connection	:	1/4" Flared
Enclosure protection	:	IP 32
Enclosure material	:	Steel (plated) with plastic cover
Maximum process temperature	:	100 °C
Ambient temperature	:	-10 to 60 °C
Switch	:	1 SPDT
Switch rating	:	15 A, 220 VAC & 10 A, 24 VDC
Sensing element	:	Phosphor bronze bellows
Process medium	:	Air, oil & water

Dimensional Details



Notes : • Drawings are not to scale. • All Dimensions are in mm.

How To Order							Example	
Basic Model								
Range								
Single Switch								
Ordering Code	Pressure	Model No.	Range (bar)		Differential (bar)		Reset	
			Min	Max	Min	Max		
6R	Low	UT6R	-0.5	6	0.6	3	Auto	
6M	High	UT6RM	-0.5	6	Fixed ≤ 1		Manual	
30R	Low	UT30R	5	30	5	10	Auto	
30M	High	UT30RM	8	30	Fixed ≤ 4		Manual	
Dual Switch								
Ordering Code	Pressure	Model No.	Range (bar)		Differential (bar)		Reset	
			Min	Max	Min	Max		
630R	Low	UTD630R	-0.5	6	0.6	3	Auto	
	High		8	30	Fixed 3-5		Auto	
630M	Low	UTD630M	-0.5	6	0.6	3	Auto	
	High		8	30	Fixed 4		Manual	
Options (*for dual pressure switch only.)								
PW	Calibration certificate		SX	SS Tag plate		FD	Fixed differential*	

XX
OR
XXX
OR
XXXX

XX

Note : Specifications and dimensions given in this product catalogue represents the state of engineering at the time of printing.
Modifications may take place and materials specified may be replaced by others without prior notice.