



### Special Features

- Robust two piece design
- The diaphragm is welded to the body to ensure separation of the filling fluid from the process medium
- All SS construction

### Application

- Diaphragm seals are designed to isolate the sensing element of pressure gauges and pressure switches from process fluids that they may be corrosive, viscous, sedimentous and / or with a high temperature.

### Specifications

#### Standard Version

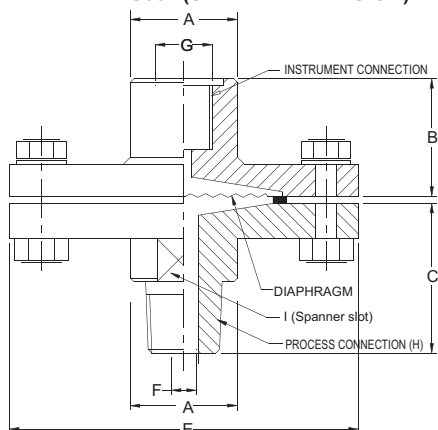
(Compatible models : AC, AE, AH, AI, AL, AQ, BA, BE, BI, BJ, BQ & BT)

Seal type & Range	: S06 = -1 to 0 kg/cm <sup>2</sup> & 0 to 70 kg/cm <sup>2</sup> (Standard)
	: S07 = 100 kg/cm <sup>2</sup> to 400 kg/cm <sup>2</sup>
Process temperature	: - 40 °C to 200 °C or as per fill fluid
Instrument connection	: ½" BSP (F)
Process connection	: ½" BSP (M)
Fill fluid	: Silicon Oil - DC 200
Mounting	: Direct (without capillary)

Diaphragm	: AISI 316L SS
Top chamber	: AISI 304 SS
Bottom chamber	: AISI 316 SS
Nuts / bolts	: AISI 304 SS
Sealing gasket	: PTFE

### Dimensions - Standard Version

TYPE "S06" (STANDARD VERSION)

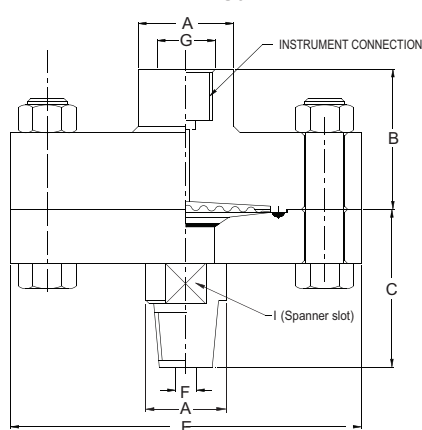


A	~ B	~ C	E	F	G	H	I	Approx. Wt. #
30	26	47	98	Ø8	½" BSP(F)	½" BSP (M)	25	1500.0

(# Weight in grams with box for Standard Model.)

Notes : • Drawings are not to scale. • All Dimensions are in mm.

TYPE "S07"



A	~ B	~ C	E	F	G	H	I	Approx. Wt. #
30	44	49.5	110	Ø8	½" BSP(F)	½" BSP (M)	25	3000.0

(# Weight in grams with box for Standard Model.)

How to Order										Example
Basic Model										
Code										
Optional Extras										
[It is recommended that the MOC of Diaphragm should be equivalent or superior than the MOC of Bottom chamber.]										
Type										
S06    -1 to 0 kg/cm² & 0 to 70 kg/cm² (Standard)    S07    100 kg/cm² to 400 kg/cm²										
Instrument Connection										

For Other Optional Items, Please Contact Factory For Delivery And Minimum Quantity Of Order.

Note : Specifications and dimensions given in this product catalogue represents the state of engineering at the time of printing.  
Modifications may take place and materials specified may be replaced by others without prior notice.



### Special Features

- All stainless steel construction
- Compact design
- Low cost version
- The diaphragm is welded to the body to ensure separation of the filling fluid from the process medium

### Application

- Diaphragm seals are designed to isolate the sensing element of pressure gauges and pressure switches from process fluids that they may be corrosive, viscous, sedimentous and / or with a high temperature

### Specifications

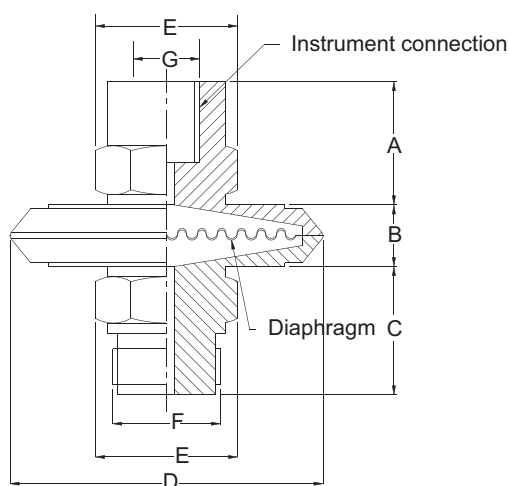
#### Standard Version

(Compatible models : AD & AT (NS 50mm & 63mm))

Range	: 1 kg/cm <sup>2</sup> to 21 kg/cm <sup>2</sup>
Process temperature	: - 40 °C to 200 °C or as per fill fluid
Instrument connection	: 1/4" BSP (F)
Process connection	: 1/4" BSP (M)
Fill fluid	: Silicon Oil - DC 200

Diaphragm	: AISI 316L SS
Body	: AISI 316 SS

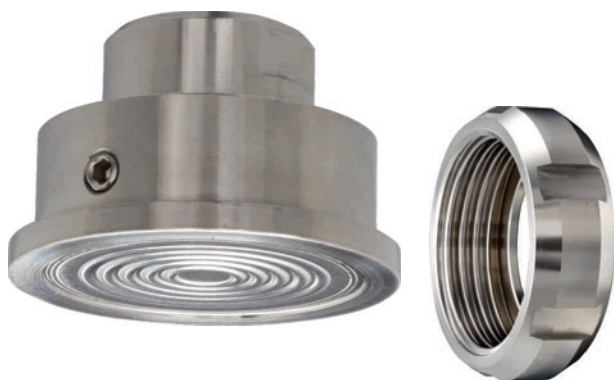
### Dimensions - Standard Version



A	B	C	D	E	F	G	Approx. Wt.#
26	14	23	62	HEX A/F 19	1/4" BSP(M)	1/4" BSP(F)	260.0

(# Weight in grams with box for Standard Model.)

How to Order	Example
<b>Basic Model</b>	
<b>Code</b>	
<b>Optional Extras</b>	
<b>Instrument Connection</b>	
<b>VN</b> 1/4" BSP (F) (Standard) <b>VO</b> 1/4" NPT(F)	XX
<b>Body</b>	
<b>CL</b> AISI 316 SS (Standard)	XX
<b>Diaphragm</b>	
<b>UJ</b> AISI 316L SS (Standard)	XX
<b>Process Connection</b>	
<b>WS</b> 1/4" BSP (M) (Standard) <b>WY</b> 1/4" NPT (M)	XX
<b>FILLING FLUIDS (*Consult factory for specifications, price and delivery.)</b>	
<b>US</b> Flurolube 4.2 [-45 to 175 °C] <b>UY</b> Silicon DC 704 [10 to 337 °C]	
<b>UT</b> Flurolube 6.3 [-40 to 235 °C] <b>UZ</b> Silicon DC 710 [7 to 371 °C]	
<b>UU</b> Flurolube F S-5 [-28 to 148 °C] <b>VA</b> Syltherm 800 [-40 to 315 °C]	XX
<b>UV</b> Food Grade OIL [-20 to 140 0C] <b>VB</b> Syltherm XLT [-100 to 260 °C]	
<b>UX</b> Silicon DC 200 [-40 to 205 °C] (Standard) <b>VC</b> Halocarbon OIL*	
<b>Other Options</b>	
<b>TB</b> Helium leak test <b>TC</b> Dry seal only without instrument <b>GH</b> Material test certificates*	XX
* Material Test Certificates Will Be Provided For Wetted Parts Only With Chemical Composition Testing. For Others, Please Consult Factory.	
<b>For Other Optional Items, Please Contact Factory For Delivery And Minimum Quantity Of Order.</b>	
Note : Specifications and dimensions given in this product catalogue represents the state of engineering at the time of printing. Modifications may take place and materials specified may be replaced by others without prior notice.	



## Special Features

- All 316 stainless steel
- Laser welded flush diaphragm
- Quick connect / disconnect for easy cleaning
- Matching DIN, SMS, RJT etc. standards

## Application

- Diaphragm seals are provided in the instruments like pressure gauges, switches, transmitters in order to isolate the sensing element from the main service due to its corrosive, viscous and sedimented nature and to avoid clogging and solidification. These seals are specially designed for applications where high purity in the process is essential.- typically in food, beverages, dairy and pharmaceutical industries

## Specifications

### Standard Version

(Compatible models : AD (NS 50 mm & 63 mm), AL (NS 100 mm & 150 mm), AI, BE, BI & BJ)

Range	:	Refer range table with nominal sizes
Process temperature	:	10°C to 150°C or as per fill fluid
Instrument connection	:	½" BSP (F)
Process connection	:	As per DIN 11851, SMS, RJT, IDF
Mounting	:	Direct (without capillary)

Diaphragm	:	AISI 316L SS
Unit nut	:	AISI 316 SS
Body	:	AISI 316 SS
Fill fluid	:	Glycerin

## Dimensions - Standard Version

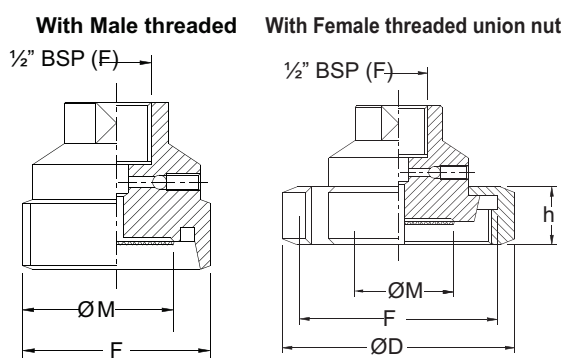
DIN 11851		
DN	M	F(DIN 405)
25*	20	Rd 52 x 1/6
32	30	Rd 58 x 1/6
40	30	Rd 65 x 1/6
50	40	Rd 78 x 1/6

\* Connection 1/4" BSP (F)

SMS		
DN	M	F(DIN 405)
1 ½"	30	Rd 60 x 1/6
2"	40	Rd 70 x 1/6

RJT/APV		
DN	M	F (Whitworth)
1 ½"	30	2" 5/16 x 8
2"	40	2" 7/8 x 6

IDF/ISS		
DN	M	F(ACME)
1 ½"	29	2" 1/32 x 8
2"	36	2" 9/16 x 8



DIN 11851				
DN	h	D	M	F(DIN 405)
25*	21	63	30	Rd 52 x 1/6
32	21	70	30	Rd 58 x 1/6
40	21	78	40	Rd 65 x 1/6
50	22	92	50	Rd 78 x 1/6

\* Connection 1/4" BSP (F)

SMS				
DN	h	D	M	F(DIN 405)
1 ½"	25	74	30	Rd 60 x 1/6
2"	26	84	40	Rd 70 x 1/6

RJT/APV				
DN	h	D	M	F (Whitworth)
1 ½"	22	Hex. 65	30	2" 5/16 x 8
2"	22	Hex. 79	40	2" 7/8 x 6

IDF/ISS				
DN	h	D	M	F(ACME)
1 ½"	30	64	30	2" 1/32 x 8
2"	30	77	40	2" 9/16 x 8

Notes : • Drawings are not to scale. • All Dimensions are in mm.

**Range Table With Nominal Sizes**

Nominal Size of Gauge	50 & 63 mm	50 & 63 mm	50, 63, 100 & 150 mm	50, 63, 100 & 150 mm
Connection Standard	DIN/ IDF/ ISS	DIN/ IDF/ ISS/ SMS/ RJT	DIN/ IDF/ ISS/ SMS/ RJT	DIN
Connection Size	25 mm (1")	32 mm (1.5")	40 mm (2")	50 mm
Ranges (bar)				
1.6	✓	✓	✓	✓
2	✓	✓	✓	✓
4	✓	✓	✓	✓
7	✓	✓	✓	✓
10	✓	✓	✓	✓
14	✓	✓	✓	✓
16	✓	✓	✓	✓
21	✓	✓	✓	✓
25	x	x	✓	✓
28	x	x	✓	✓
40	x	x	✓	✓
-1 to 4	x	✓	✓	✓
-1 to 7	x	✓	✓	✓
-1 to 10	x	✓	✓	✓
-1 to 14	x	✓	✓	✓
-1 to 21	x	✓	✓	✓

How to Order			Example
<b>Basic Model</b>			
<b>Code</b>			
<b>Optional Extras</b>			
<b>Process Connection Type</b>			
<b>M</b> With Male Threaded Connection		<b>F</b> With Female Threaded Union Nut	X
<b>Process Connection Standard &amp; Size</b>			
<b>KH</b> DIN (25, 32, 40 OR 50 mm)	<b>KJ</b> RJT/APV (1½" OR 2")		XX XXX (1 ½)
<b>KI</b> SMS (1½" OR 2")	<b>KK</b> IDF / ISS (1½" OR 2")		
(Example - Write KH DIN 25 )			
<b>Instrument Connection</b>			
<b>VN</b> 1/4" BSP (F) (Standard for DIN 25 & NS 50 & 63 mm)	<b>VO</b> 1/4" NPT (F)		XX
<b>VL</b> ½" BSP (F)(Standard)	<b>VM</b> ½" NPT (F)		
<b>Diaphragm</b>			
<b>UJ</b> AISI 316L SS (Standard)			XX
<b>Filling Fluids</b>			
<b>UF</b> Glycerin [10 to 150°C / 50 to 302°F] (Standard)	<b>UG</b> Liquid Paraffin [10 to 200°C / 50 to 392°F]		XX
<b>UV</b> Food Grade Oil [-20 to 140°C / -4 to 284°F]			
<b>Body</b>			
<b>CL</b> AISI 316 SS (Standard)	<b>CM</b> AISI 316L SS		XX
<b>Options</b>			
<b>Gasket (sealing Ring)</b>			
<b>FA</b> DIN (25, 32, 40 OR 50 mm)	<b>FC</b> RJT/APV (1½" OR 2")		XX
<b>FB</b> SMS (1½" OR 2")	<b>FD</b> IDF / ISS (1½" OR 2")		
<b>Gasket (sealing Ring) Material</b>			
<b>VU</b> SILICON (Standard)	<b>VI</b> PTFE		XX
<b>Bottom Mating Part (male Or Female)</b>			
<b>KLM</b> DIN (25, 32, 40 OR 50mm)	<b>KNM</b> RJT / APV (1½" OR 2")	<b>KLF</b> DIN (25, 32, 40 OR 50mm)	XXX XXX (1½")
<b>KMM</b> SMS (1½" OR 2")	<b>KOM</b> IDF / ISS (1½" OR 2")	<b>KMF</b> SMS (1½" OR 2")	
<b>KNF</b> RJT / APV (1½" OR 2")			
<b>KOF</b> IDF / ISS (1½" OR 2")			
(Example - To select male part, write KLM DIN 25 & to select female part, write KMF SMS 1½")			
<b>Remote Mounting (with Capillary Of Max. Up To 2 Mtrs.)</b>			
Specify In Meters (e.g. 1.5 = 1.5 Meters 2.0 = 2 Meters)			1Mtr.
<b>Capillary</b>			
<b>PE</b> AISI 304 SS	<b>PG</b> AISI 316 SS		XX
<b>Capillary Covered With Armour (applicable With Pe Or Pg If Selected)</b>			
<b>PF</b> AISI 304 SS	<b>PH</b> AISI 316 Ss	<b>PI</b> PVC (ambient Temp. Max. 60°C)	XX
<b>Other Options</b>			
<b>TB</b> Helium Leak Test	<b>TC</b> Dry Seal Only Without Instrument	<b>GH</b> Material Test Certificates*	XX

\* Material Test Certificates Will Be Provided For Wetted Parts Only With Chemical Composition Testing.  
For Others, Please Consult Factory.

For Other Optional Items, Please Contact Factory For Delivery And Minimum Quantity Of Order.

Note : Specifications and dimensions given in this product catalogue represents the state of engineering at the time of printing.  
Modifications may take place and materials specified may be replaced by others without prior notice.



## Special Features

- Ideal for pressure transmitter
- Laser welded diaphragm
- One piece AISI 316 SS construction
- Flush diaphragm

## Application

- Diaphragm seals are provided in the instruments like pressure gauges, switches, transmitters in order to isolate the sensing element from the main service due to its corrosive, viscous and sedimented nature and to avoid clogging and solidification

## Specifications

### Standard Version

(Compatible models : AD (NS 63 mm) & AL (NS 100 mm))

Note: Pressure Gauge will be provided maximum to NS 100 mm with internal system of NS 63 mm.

Range	: Refer below table
Process temperature	: -40°C to 200°C or as per fill fluid
Instrument connection	: 1/4" BSP (F)
Process connection	: 3/4" BSP (M)
Mounting	: Direct (without capillary)

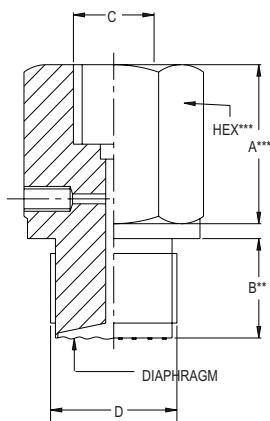
Diaphragm	: AISI 316L SS
Body	: AISI 316 SS
Fill fluid	: Silicon Oil - DC 200

## Process Connection & Range Selection Table

Thread Size	1/2" BSP (M)	3/4" BSP (M)	1" BSP (M)	1 1/2" BSP (M)	2" BSP (M)
Code	WU	WF	WW	WX	WB
Thread Size	1/2" NPT (M)	3/4" NPT (M)	1" NPT (M)	1 1/2" NPT (M)	2" NPT (M)
Code	WA	XB	XC	XD	XE
Ranges (bar)					
4	x	x	x	x	✓
6	x	x	x	✓	✓
10	x	x	x	✓	✓
16	x	x	✓	✓	✓
25	x	✓	✓	✓	✓
40	✓	✓	✓	✓	✓
60	✓	✓	✓	✓	✓
100	✓	✓	✓	✓	✓
160	✓	✓	✓	✓	✓
200	✓	✓	✓	✓	✓
250	✓	✓	✓	✓	✓
400	✓	✓	✓	✓	✓
600	✓	✓	✓	✓	✓



**Dimensions - Standard Version**



A***	B**	C	D*	HEX***	Approx. Wt.#
18	20	1/4" BSP(F)	3/4" BSP(M)	32	500.0

(# Weight in grams with box for Standard Model.)

Notes :

- Drawings are not to scale.
- All Dimensions are in mm.

**How To Order**

Example

**Basic Model**

**Code**

**Optional Extras**

**Body**

**CL** AISI 316 SS (Standard)      **CM** AISI 316L SS

**Diaphragm**

**UJ** AISI 316L SS (Standard)

**Instrument Connection**

**VN** 1/4" BSP (F) (Standard)      **VP** 3/8" BSP (F)      **VL** 1/2" BSP (F)  
**VO** 1/4" NPT (F)      **VM** 1/2" NPT (F)

**Process Connection**

**WU** 1/2" BSP (M)      **WW** 1" BSP (M)      **WX** 1 1/2" BSP (M)      **WB** 2" BSP (M)      **WF** 3/4" BSP (M) (Standard)  
**WA** 1/2" NPT (M)      **XC** 1" NPT (M)      **XD** 1 1/2" NPT (M)      **XE** 2" NPT (M)      **XB** 3/4" NPT (M)

**Filling Fluids** (\* Consult factory for specifications, price and delivery)

**US** Flurolube 4.2 [-45 to 175 °C]      **UY** Silicon DC 704 [10 to 337 °C]  
**UT** Flurolube 6.3 [-40 to 235 °C]      **UZ** Silicon DC 710 [7 to 371 °C]  
**UU** Flurolube FS-5 [-28 to 148 °C]      **VA** Syltherm 800 [-40 to 315 °C]  
**UV** Food Grade OIL [-20 to 140 °C]      **VB** Syltherm XLT [-100 to 260 °C]  
**UX** Silicon DC 200 [-40 to 205 °C] (Standard)      **VC** Halocarbon OIL\*

**Other Options**

**TB** Helium Leak Test      **TC** Dry Seal Only Without Instrument  
**GH** Material Test Certificates\*

\* Material Test Certificates Will Be Provided For Wetted Parts Only With Chemical Composition Testing.  
For Others, Please Consult Factory.

Note: For Moc Like Monel, Hastelloy-c Etc. , Please Contact Factory For Price And Delivery.

**For Other Optional Items, Please Contact Factory For Delivery And Minimum Quantity Of Order.**

Note : Specifications and dimensions given in this product catalogue represents the state of engineering at the time of printing.  
Modifications may take place and materials specified may be replaced by others without prior notice.



### Special Features

- All AISI 316 SS construction
- Light weight
- Economical
- Ideal choice for high pressure
- The diaphragm is welded to the body to ensure separation of the filling fluid from the process medium

### Application

- Diaphragm seals are designed to isolate the sensing element of pressure gauges and pressure switches from process fluids that they may be corrosive, viscous, sedimentous and / or with a high temperature

### Specifications

#### Standard Version

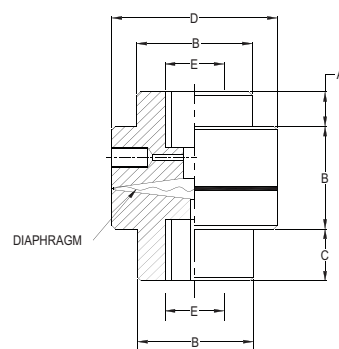
(Compatible models : AC, AE, AH, AI, AL, AQ, BA, BE, BI, BJ, BQ & BT)

Seal type & Range	: S11 = -1 kg/cm <sup>2</sup> to 0 & 0 to 4 kg/cm <sup>2</sup> (Standard)
	: S12 = 6 kg/cm <sup>2</sup> to 70 kg/cm <sup>2</sup>
	: S13 = 100 kg/cm <sup>2</sup> to 400 kg/cm <sup>2</sup>
	: S14 = 250 kg/cm <sup>2</sup> to 600 kg/cm <sup>2</sup>
Process temperature	: - 40 °C to 200 °C or as per fill fluid
Instrument connection	: 1/2" BSP (F)
	: 1/4" BSP (F) for type S14
Process connection	: 1/2" BSP (M)
	: 1/4" BSP (F) for type S14
Fill fluid	: Silicon Oil - DC 200
Mounting	: Direct (without capillary)

Diaphragm	: AISI 316L SS
Body	: AISI 316 SS

### Dimensions - Standard Version

#### TYPE "S14"

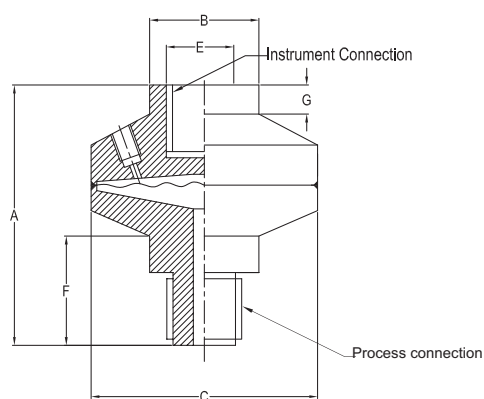


A	B	C	D	E	Approx. Wt.#
10	30	10	34	1/4" BSP(F)	350.0

(# Weight in grams with box for Standard Model.)

### Dimensions - Standard Version

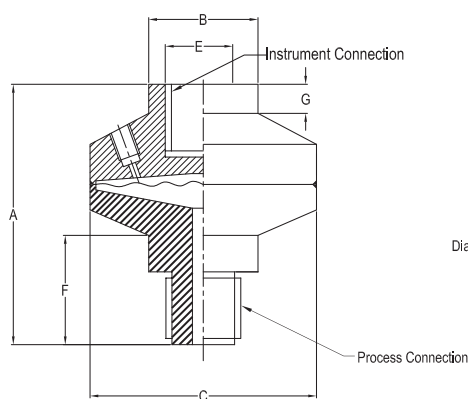
#### TYPE "S11"



A	B	C	E	F	G	Approx. Wt.#
73	30	62	1/2"BSP(F)	30	8	700.0

(# Weight in grams with box for Standard Model.)

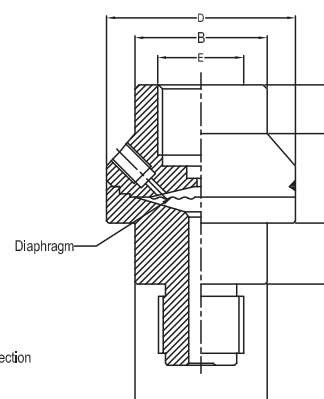
#### TYPE "S12"



A	B	C	E	F	G	Approx. Wt.#
68.5	30	53	1/2"BSP(F)	35	8	600.0

(# Weight in grams with box for Standard Model.)

#### TYPE "S13"



A	B	C	D	E	Approx. Wt.#
10	22	15	46.5	1/2"BSP(F)	400.0

(# Weight in grams with box for Standard Model.)

How to Order				
Basic Model				
Code				
Optional Extras				
[It is recommended that the MOC of Diaphragm should be equivalent.]				
SEAL TYPE				
S11	1 kg/cm <sup>2</sup> to 0 & 0 to 4 kg/cm <sup>2</sup> (Standard)		S13	100 kg/cm <sup>2</sup> to 400 kg/cm <sup>2</sup>
S12	6 kg/cm <sup>2</sup> to 70 kg/cm <sup>2</sup>		S14	250 kg/cm <sup>2</sup> to 600 kg/cm <sup>2</sup>
Instrument Connection (*For seal type S14)				
VN	1/4" BSP(F) (Standard)*	VP	3/8" BSP (F)	VL 1½" BSP (F) (Standard)
VO	1/4" NPT (F)		VM	1½" NPT (F)
Top Chamber				
CL	AISI 316 SS (Standard)	CM	AISI 316L SS	XW AISI 304 SS
Diaphragm				
UJ	AISI 316L (Standard)			
Bottom Chamber				
TM	AISI 316 SS (Standard)	TL	AISI 316L SS	TT Hastelloy 'C' TX MONEL
Process Connection (*For seal type S14)				
WE	1/4" BSP(F) (Standard)*	WI	1/4" NPT (F)	WY 1/4" NPT(M) WS 1/4" BSP(M)
WC	3/8" BSP(F)	WH	½" NPT (F)	WA ½" NPT(M) WT 3/8" BSP(M)
WD	½" BSP(F)			WU ½" BSP(M) (Standard)
Note : Connections like Metric, PT/ PF/ Flaired / UNF/ G/ R etc can be provided on request.				
Filling Fluids (* Consult Factory For Specifications, Price And Delivery.)				
US	Flurolube 4.2 [-45 to 175 °C]		UY	Silicon DC 704 [10 to 337 °C]
UT	Flurolube 6.3 [-40 to 235 °C]		UZ	Silicon DC 710 [7 to 371 °C]
UU	Flurolube FS-5 [-28 to 148 °C]		VA	Syltherm 800 [-40 to 315 °C]
UV	Food Grade OIL [-20 to 140 °C]		VB	Syltherm XLT [-100 to 260 °C]
UX	Silicon Dc 200 [-40 to 205 °C] (Standard)		VC	Halocarbon OIL*
Remote Mounting (with Capillary Of Max. Up To 2 Mtrs.)				
Specify In Meters (e.g. 1.5 = 1.5 METERS 2.0 = 2 METERS)				
Capillary				
PE	AISI 304 SS	PG	AISI 316 SS	
Capillary Covered With Armour (Applicable with PE or PG if selected)				
PF	AISI 304 SS	PH	AISI 316 SS	PI PVC (Ambient Temp. Max. 60°C)
Other Options				
TB	Helium Leak Test		TC	Dry Seal Only Without Instrument
			GH	Material Test Certificates*
* Material Test Certificates Will Be Provided For Wetted Parts Only With Chemical Composition Testing. For Others, Please Consult Factory.				

For other optional items, please contact factory for delivery and minimum quantity of order.



## Special Features

- Laser welded flush diaphragm
- Quick connect / disconnect for easy cleaning
- Suitable for food, dairy & pharmaceutical industries

## Application

- Diaphragm seals are provided in the instruments like pressure gauges, switches, transmitters in order to isolate the sensing element from the main service due to its corrosive, viscous and sedimented nature and to avoid clogging and solidification. These seals are used in hygienic applications where purity in process is essential - typically in food, dairy beverages and pharmaceutical industries

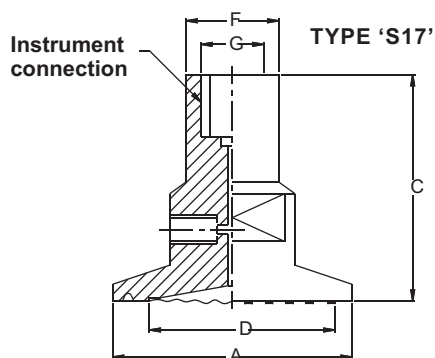
## Specifications

### Standard Version

(Compatible model : AE, AH, AI, AL (NS 100 mm & 150 mm) & BE)

Seal type & Range	:	S16 = -1 to 0 & 0 to 40 kg/cm <sup>2</sup> (Standard) (Suitable for NS 100 mm & above)
	:	S17 = -1 to 0 & 0 to 40 kg/cm <sup>2</sup> (Dry seal only) (Suitable for NS 63 mm & 80 mm)
Process temperature	:	10°C to 150°C or as per fill fluid
Instrument connection	:	S16 = 1/2" BSP (F)
	:	S17 = 1/4" BSP (F)
Process connection	:	1 1/2" SANITARY SEAL (without clamp & gasket)
Mounting	:	Direct (without capillary)
Diaphragm	:	AISI 316L SS
Body	:	AISI 316 SS
Fill Fluid	:	Glycerin

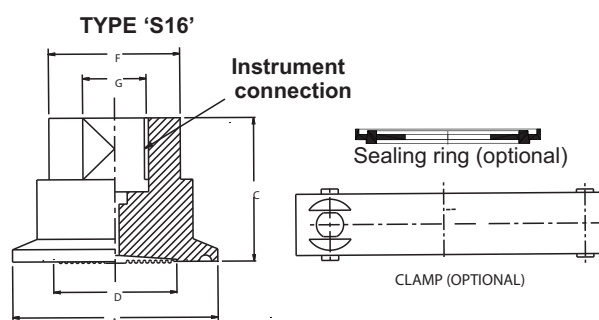
## Dimensions - Standard Version



Size	A	C	D	F	G	Approx. Wt. #
1.5"	50.5	48	32	19.50	1/4" BSP (F)	250.0
2"	64	48	40	19.50	1/4" BSP (F)	400.0
2.5"	77.5	48	52	19.50	1/4" BSP (F)	600.0

(# Weight in grams with box for Standard Model.)

Notes : • Drawings are not to scale. • All Dimensions are in mm.



Size	A	C	D	F	G	Approx. Wt. #
1"	50.50	35	22	29.5	1/2" BSP (F)	200.0
1 1/2"	50.50	35	32	38.5	1/2" BSP (F)	200.0
2"	64	35	40	51.5	1/2" BSP (F)	350.0
2 1/2"	77.5	35	52	64	1/2" BSP (F)	500.0

(# Weight in grams with box for Standard Model.)

How to Order			Example
Basic Model			
Code			
Optional Extras			XXX
[It is recommended that the size of the end connection of bottom mating part should be equivalent or greater than ½" Pipe.]			
Seal Type			
S16	-1 to 0 & 0 to 40 kg/cm² (Standard)	S17 -1 to 0 & 0 to 40 kg/cm² (Dry seal only)	
Sanitary Seal			XX
YM	1" Sanitary Seal IN AISI 316 SS		
YN	1½" Sanitary Seal IN AISI 316 SS (Standard)		
YO	2" Sanitary Seal IN AISI 316 SS		
YP	2 ½" Sanitary Seal IN AISI 316 SS		
Instrument Connection (* For Dry Seal Type: S17)			
VO	1/4" NPT (F)	VN 1/4" BSP (F) (Standard)*	XX
VM	½" NPT (F)	VL ½" BSP (F) (Standard)	
VP 3/8" BSP (F)			
Body			
CL	AISI 316 SS (Standard)	CM AISI 316L SS	XX
Bottom Mating Part			
KF	1" Sanitary Seal In AISI 316 SS	KC 2" Sanitary Seal In AISI 316 SS	XX
KB	1½" Sanitary Seal In AISI 316 SS	KD 2 ½" Sanitary Seal In AISI 316 SS	
End Connection Of Bottom Mating Part			
4ZB	½" PIPE, Sch. 40 (Plain End)	5ZB ¾" PIPE, Sch. 40 (Plain End)	XX
Note : Threaded Connections Are Available On Request. Please Consult Factory.			
Diaphragm			
UJ	AISI 316L (Standard)		XX
Filling Fluids			
UF	Glycerin [10 to 150 °C / 50 to 302°F] (Standard)	UG Liquid Paraffin [10 To 200 °C / 50 To 392 °F]	XX
UV	Food Grade Oil [-20 to 140 °C / -4 to 284 °F]		
Clamp			
ZN	1" Clamp AISI 304 SS	ZP 2" CLAMP AISI 304 SS	XX
ZO	1½" Clamp AISI 304 SS	ZQ 2 ½" CLAMP AISI 304 SS	
Gasket (sealing Ring)			
FU	1" Silicon Gasket	GW 1" PTFE Gasket	XX
FX	1½" Silicon Gasket	GX 1½" PTFE Gasket	
FY	2" Silicon Gasket	GY 2" PTFE Gasket	
FZ	2 ½" Silicon Gasket	GZ 2 ½" PTFE Gasket	
Remote Mounting (with Capillary Of Max. Up To 2 Mtrs.)			
Specify In Meters (e.g. 1.5 = 1.5 METERS 2.0 = 2 METERS)			1Mtr.
Capillary			
PE	AISI 304 SS	PG AISI 316 SS	XX
Capillary Covered With Armour (applicable With PE Or PG If Selected)			
PF	AISI 304 SS	PH AISI 316 SS	XX
		PI PVC (Ambient Temp. Max. 60°C)	
Other Options			
TB	Helium Leak Test	TC Dry Seal Only Without Instrument	XX
		GH Material Test Certificates*	
* Material Test Certificates Will Be Provided For Wetted Parts Only With Chemical Composition Testing. For Others, Please Consult Factory.			

\* Material Test Certificates Will Be Provided For Wetted Parts Only With Chemical Composition Testing. For Others, Please Consult Factory.

For Other Optional Items, Please Contact Factory For Delivery And Minimum Quantity Of Order.

Note : Specifications and dimensions given in this product catalogue represents the state of engineering at the time of printing. Modifications may take place and materials specified may be replaced by others without prior notice.



### Special Features

- Continuous duty
- Flushing ring (optional)
- "I" Section extension to facilitate smaller flange sizes
- Suitable for corrosive & viscous service

### Application

- Diaphragm seals are provided in the instruments like pressure gauges, switches, transmitters in order to isolate the sensing element from the main service due to its corrosive, viscous and sedimented nature and to avoid clogging and solidification
- This can be widely used with anti corrosive treatment/protection & various flanged sizes

### Specifications

Standard Version (preferable For Flange Size 1" And Below)

(compatible Models : AC, AE, AH, AI, AL, AQ, BA, BE, BI, BJ, BQ & BT)

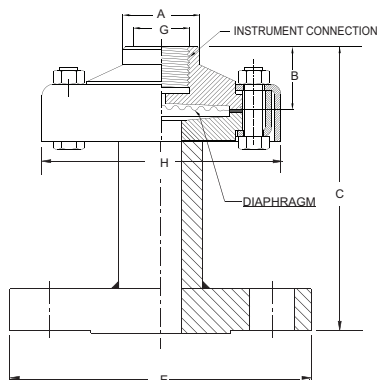
Seal type & Range	:	S21= -1 to 0 kg/cm <sup>2</sup> & 0 to 70 kg/cm <sup>2</sup> (Standard)
	:	S22 = 100 kg/cm <sup>2</sup> to 400 kg/cm <sup>2</sup>
	:	S23= -1 to 0 kg/cm <sup>2</sup> & 0 to 70 kg/cm <sup>2</sup>
Process temperature	:	Max. 150 °C for PTFE lined
	:	- 40 °C to 200 °C for without PTFE lined
Instrument connection	:	½" BSP (F)
Process connection	:	Flange (as per DIN/BS/ANSI/JIS) Finish 125 - 250 AARH
Fill fluid	:	Silicon Oil - DC 200
Mounting	:	Direct (without capillary)

\* Range of selected instrument shall be suitable to flange pressure rating.

Diaphragm	:	AISI 316L SS
Top chamber	:	AISI 304 SS
Bottom chamber ("I" section)	:	AISI 316 SS flange (as per DIN/BS/ANSI/JIS)
Nut, bolts & slip ring (cup type)	:	Steel (Plated)
Sealing gasket	:	PTFE

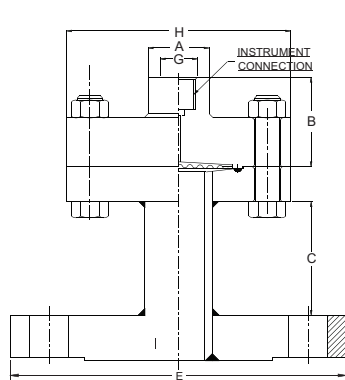
### Dimensions - Standard Version

TYPE "S21"- STANDARD VERSION



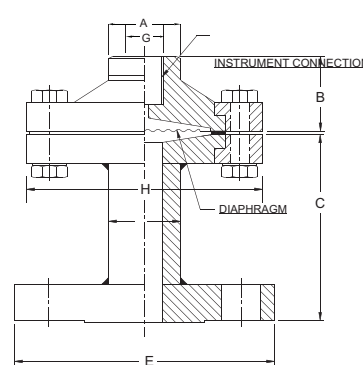
Seal Type	Ranges	A	B	C	E	H	G
S21	-1 to 0 kg/cm <sup>2</sup> 0 to 70 kg/cm <sup>2</sup>	30	31	75	*	98	½" BSP (F)

TYPE "S22"



Seal Type	Ranges	A	B	C	E	H	G
S22	100 to 400 kg/cm <sup>2</sup>	30	44	50	*	110	½" BSP (F)

TYPE "S23"



Seal Type	Ranges	A	B	C	E	H	G
S23	-1 to 0 kg/cm <sup>2</sup> 0 to 70 kg/cm <sup>2</sup>	30	31	75	*	98	½" BSP (F)

\* As per standard flange table ANSI, DIN, BS, JIS Etc.,

Notes : • Drawings are not to scale. • All Dimensions are in mm.

**Flange Table With Ordering Codes**

**How To Select**

e.g. For flange size of 1as per BS-10 table E with raised face : B97 - A2

**A2** Raised Face

**A3** Flat Face

Flange Finish shall be 125 - 250 AARH as a standard. For other finish, please consult factory.

**As Per DIN 2527**

DN	PN	CODE
10	6	A01
	10	A02
	16	A03
	25	A04
	40	A05
	64	A06
	100	A07
	160	A08
	250	A09
	400	A10
15	6	A11
	10	A12
	16	A13
	25	A14
	40	A15
	64	A16
	100	A17
	160	A18
	250	A19
	400	A20
20	6	A21
	10	A22
	16	A23
	25	A24
	40	A25
25	6	A26
	10	A27
	16	A28
	25	A29
	40	A30
	64	A31
	100	A32
	160	A33
	250	A34
	400	A35

**As Per DIN 2633**

DN	PN	CODE
10	16	A81
15		A82
20		A83
25		A84

**As Per DIN 2635**

DN	PN	CODE
10	40	A99
15		B01
20		B02
25		B03

**As Per DIN 2642**

DN	PN	CODE
10	10	A90
15		A91
20		A92
25		A93

**As Per ANSI B 16.5**

NOMINAL SIZE	RATING /CLASS	CODE
1/2"	150	B09
	300	B10
	600	B11
	900	B12
	1500	B13
	2500	B14
3/4"	150	B15
	300	B16
	600	B17
	900	B18
	1500	B19
	2500	B20
NOMINAL SIZE	RATING /CLASS	CODE
1"	150	B21
	300	B22
	600	B23
	900	B24
	1500	B25
	2500	B26

**As Per JIS - B 2210**

NOMINAL SIZE	RATING /CLASS	CODE
10A	5K	B57
	10K	B58
	40K	B59
15A	5K	B60
	10K	B61
	40K	B62
20A	5K	B63
	10K	B64
	40K	B65
NOMINAL SIZE	RATING /CLASS	CODE
25A	5K	B66
	10K	B67
	40K	B68

**As Per BS - 10**

NOMINAL SIZE	TABLE	CODE
1/2"	D	B84
	E	B85
	F	B86
	H	B87
	J	B88
3/4"	K	B89
	D	B90
	E	B91
	F	B92
	H	B93
1"	J	B94
	K	B95
NOMINAL SIZE	TABLE	CODE
1"	D	B96
	E	B97
	F	B98
	H	B99
	J	C01
	K	C02



How To Order					Example																																					
Basic Model																																										
Code																																										
Optional Extras																																										
[It is recommended that the MOC of Diaphragm should be equivqlent or superior than the MOC of Bottom chamber.]																																										
Seal Type					XXX																																					
S21	1 to 0 kg/cm² & 0 to 70 kg/cm² (Standard)	S22	100 kg/cm² to 400 kg/cm²	S23		-1 to 0 kg/cm² & 0 to 70 kg/cm²																																				
Instrument Connection					XX																																					
VP	3/8" BSP (F)	VL	½" BSP (F)(Standard)	VM		½" NPT (F)																																				
Top Chamber					XX																																					
XW	AISI 304 SS (Standard)	XY	AISI 316 SS	YA		AISI 316L SS	YC	Carbon Steel																																		
Diaphragm (* Range up to 21 kg/cm²)					XX																																					
UL	Hastelloy 'C'	UP	Silver*	UR		Titanium	UJ	AISI 316I SS (Standard)																																		
UQ	Tantalum			UM	Monel																																					
Sealing Gasket					XX																																					
VI	PTFE (Standard)	YR	Metal																																							
Bottom Chamber (I Section) (* Refer Pressure v/s Temperature table below.)					XX																																					
TK	AISI 304 SS	TZ	PVC*	<table><tr><th>MOC OF</th><th colspan="6">PRESSURE V/S TEMPERATURE</th></tr><tr><th>BOTTOM CHAMBER</th><th>20 °C</th><th>40 °C</th><th>60 °C</th><th>80 °C</th><th>100 °C</th><th>120 °C</th></tr><tr><td>PVDF</td><td>10 kg/cm²</td><td>10 kg/cm²</td><td>10 kg/cm²</td><td>7 kg/cm²</td><td>4 kg/cm²</td><td>2 kg/cm²</td></tr><tr><td>PP</td><td>10 kg/cm²</td><td>10 kg/cm²</td><td>6 kg/cm²</td><td>4 kg/cm²</td><td>1 kg/cm²</td><td>NA</td></tr><tr><td>PVC</td><td>10 kg/cm²</td><td>10 kg/cm²</td><td>4 kg/cm²</td><td>1 kg/cm²</td><td>NA</td><td>NA</td></tr></table>			MOC OF	PRESSURE V/S TEMPERATURE						BOTTOM CHAMBER	20 °C	40 °C	60 °C	80 °C	100 °C	120 °C	PVDF	10 kg/cm²	10 kg/cm²	10 kg/cm²	7 kg/cm²	4 kg/cm²	2 kg/cm²	PP	10 kg/cm²	10 kg/cm²	6 kg/cm²	4 kg/cm²	1 kg/cm²	NA	PVC	10 kg/cm²	10 kg/cm²	4 kg/cm²	1 kg/cm²	NA	NA	
MOC OF	PRESSURE V/S TEMPERATURE																																									
BOTTOM CHAMBER	20 °C	40 °C	60 °C				80 °C	100 °C	120 °C																																	
PVDF	10 kg/cm²	10 kg/cm²	10 kg/cm²				7 kg/cm²	4 kg/cm²	2 kg/cm²																																	
PP	10 kg/cm²	10 kg/cm²	6 kg/cm²				4 kg/cm²	1 kg/cm²	NA																																	
PVC	10 kg/cm²	10 kg/cm²	4 kg/cm²	1 kg/cm²		NA	NA																																			
TL	AISI 316L SS	UA	PVDF*																																							
UH	Titanium	TY	POLYPROPELENE*																																							
TT	Hastelloy C																																									
TX	Monel																																									
TN	Carbon Steel																																									
TM	AISI 316 SS (Standard)																																									
Process Connection					XXX																																					
As Per DIN / BS / ANSI/ JIS (select Code From Flange Table)																																										
Tension Flange & Nut - Bolts (*Nut & Bolts will be AISI 304 SS)																																										
VB	Pressed Steel - Cup Type (plated) (standard)			XS	Steel (plated)	XX																																				
XQ	AISI 304 SS			XR	AISI 316 SS*																																					
Protection On Wetted Parts					XX																																					
VS	PTFE Lining On Bottom Chamber ("I" SECTION)- 2 mm Thick (Max. Up to 150 °C)																																									
VV	PTFE Protection For Diaphragm (Max. Up to 150 °C) (Suitable for Pressure Ranges only)																																									
VZ	PTFE Coating On Diaphragm (Max. Up to 315 °C)																																									
Filling Fluids (* Consult factory for specifications, price and delivery)					XX																																					
US	Fluorolube 4.2 [-45 to 175 °C]	UY	Silicon DC 704 [10 to 337 °C]																																							
UT	Fluorolube 6.3 [-40 to 235 °C]	UZ	Silicon DC 710 [7 to 371 °C]																																							
UU	Fluorolube FS-5 [-28 to 148 °C]	VA	Syltherm 800 [-40 to 315 °C]																																							
UV	Food Grade Oil [-20 to 140 °C]	VB	Syltherm XLT [-100 to 260 °C]																																							
UX	Silicon DC 200 [-40 to 205 °C] (Standard)	VC	Halocarbon Oil*																																							
Remote Mounting (With capillary of Max. Up to 6 Mtrs.)					3Mtr.																																					
Specify In Meters (e.g. 1.5 = 1.5 METERS 2.0 = 2 METERS)																																										
Capillary																																										
PE	AISI 304 SS	PG	AISI 316 SS		XX																																					
Capillary Covered With Armour (Applicable with PE or PG if selected)					XX																																					
PF	AISI 304 SS	PH	AISI 316 SS	PI		PVC (Ambient Temp. Max. 60°C)																																				
Other Options					XX																																					
TB	Helium Leak Test	TC	Dry Seal Only Without Instrument	GH		Material Test Certificates*																																				
TF Conformity as per NACE Standard																																										
* Material test certificates will be provided for wetted parts only with chemical composition testing. For others, please consult factory.																																										
Refer Datasheet EE for selection of Flushing Rings.																																										

For other optional items, please contact factory for delivery and minimum quantity of order.





### Special Features

- Laser welded flush diaphragm
- Easy flushing (through flushing ring)
- Most suitable for slurry, corrosive & high viscous service
- Flushing ring, flange & diaphragm are available in various type of SS & exotic materials.

### Application

Diaphragm Seals Are Provided In The Instruments Like Pressure Gauges, Switches, Transmitters In Order To Isolate The Sensing Element From The Main Service Due To Its Corrosive, Viscous And Sedimented Nature And To Avoid Clogging And Solidification. These Kind Of Seals Are Widely Used In The Viscous & Corrosive Services Where Flushing Is Required Periodically & Frequently.

### Specifications

#### Standard Version ( For Flange Size 1½" And Above)

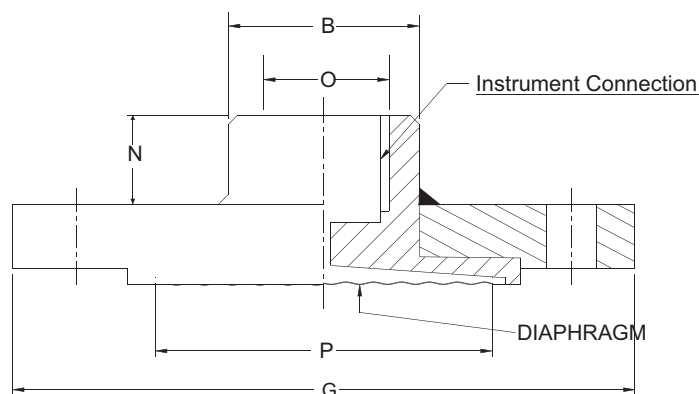
(Compatible Models : AC, AE, AH, AI, AL, AQ, BA, BE, BI, BJ, BQ & BT)

Range	: -1 kg/cm <sup>2</sup> 0 & 0 to 250 kg/cm <sup>2</sup> *
Process Temperature	: -40°C to 200°C or as per fill fluid
Instrument Connection	: ½" BSP (F)
Process Connection	: Flange (As per DIN/BS/ANSI/JIS), 40 NB (1½") & above
Flange Finish	: 125-250 AARH

\* Range of selected instrument shall be suitable to flange pressure rating.

Diaphragm	: AISI 316L SS
Flange	: AISI 316 SS
Fill Fluid	: Silicon Oil - DC 200
Gasket	: PTFE

### Dimensions - Standard Version



B	G	N	O	P
30	**	20	½" BSP(F)	***

\*\* As per standard flange table ANSI, DIN, BS, JIS Etc.,  
 \*\*\* 40 / 53 / 63 / 70 mm Dia. Diaphragm to suit Flange

Notes : • Drawings are not to scale. • All Dimensions are in mm.

**Flange Table With Ordering Codes**

**How To Select**

E.g. For flange size of 1 ½" as per BS-10 table E with raised face : C10 - A2

**A2** Raised Face

**A3** Flat Face

Flange Finish shall be 125 - 250 AARH as a standard. For other finish, please consult factory.

**As Per DIN 2527**

DN	PN	CODE	DN	PN	CODE
40	6	A41	65	6	A61
	10	A42		10	A62
	16	A43		16	A63
	25	A44		25	A64
	40	A45		40	A65
	64	A46		64	A66
	100	A47		100	A67
	160	A48		160	A68
	250	A49		250	A69
	400	A50		400	A70
50	6	A51	80	6	A71
	10	A52		10	A72
	16	A53		16	A73
	25	A54		25	A74
	40	A55		40	A75
	64	A56		64	A76
	100	A57		100	A77
	160	A58		160	A78
	250	A59		250	A79
	400	A60		400	A80

**As Per DIN 2642**

DN	PN	CODE
40	10	A95
50		A96
65		A97
80		A98

**As Per DIN 2633**

DN	PN	CODE
40	16	A86
50		A87
65		A88
80		A89

**As Per DIN 2635**

DN	PN	CODE
40	40	B05
50		B06
65		B07
80		B08

**As Per JIS - B 2210**

NOMINAL SIZE	RATING /CLASS	CODE
40A	5K	B72
	10K	B73
	40K	B74

**As Per BS - 10**

NOMINAL SIZE	TABLE	CODE
1½"	D	C09
	E	C10
	F	C11
	H	C12
	J	C13
	K	C14
2"	D	C15
	E	C16
	F	C17
	H	C18
	J	C19
	K	C20

NOMINAL SIZE	RATING /CLASS	CODE
50A	5K	B75
	10K	B76
	40K	B77
65A	5K	B78
	10K	B79
	40K	B80
80A	5K	B81
	10K	B82
	40K	B83

**As Per ANSI B 16.5**

NOMINAL SIZE	RATING /CLASS	CODE	NOMINAL SIZE	RATING /CLASS	CODE
1 ½"	150	B33	2½"	150	B45
	300	B34		300	B46
	600	B35		600	B47
	900	B36		900	B48
	1500	B37		1500	B49
	2500	B38		2500	B50
2"	150	B39	3"	150	B51
	300	B40		300	B52
	600	B41		600	B53
	900	B42		900	B54
	1500	B43		1500	B55
	2500	B44		2500	B56

NOMINAL SIZE	TABLE	CODE
2½"	D	C21
	E	C22
	F	C23
	H	C24
	J	C25
	K	C26
3"	D	C27
	E	C28
	F	C29
	H	C30
	J	C31
	K	C32

How To Order					Example			
Basic Model								
Code								
Optional Extras								
[It is recommended that the MOC of Diaphragm & flange should be equivalent.]								
Instrument Connection								
VM	½" NPT (F)	VL	½" BSP (F)(Standard)	VP		3/8" BSP (F)	XX	
Diaphragm								
UQ	Tantalum	UR	Titanium	UJ		AISI 316L SS (Standard)	XX	
UL	Hastelloy 'C'	UM	Monel					
Flange Material								
TK	AISI 304 SS	TN	Carbon Steel	UH		Titanium	UD	TANTALUM
TL	AISI 316L SS	TX	Monel	TT	Hastelloy C	TM	AISI 316 SS (Standard)	
Process Connection								
As Per DIN / BS / ANSI / JIS (Select Code From Flange Table)						XXX		
Protection On Wetted Parts								
VZ	PTFE Coating On Diaphragm (Max. Up to 315 °C)					XX		
VV	PTFE Protection For Diaphragm (Max. Up to 150 °C) (Suitable for Pressure Ranges only)							
Filling fluids (* Consult factory for specifications, price and delivery.)								
US	Flurolube 4.2 [-45 to 175 °C]		UY	Silicon DC 704 [10 to 337 °C]		XX		
UT	Flurolube 6.3 [-40 to 235 °C]		UZ	Silicon DC 710 [7 to 371 °C]				
UU	Flurolube FS-5 [-28 to 148 °C]		VA	Syltherm 800 [-40 to 315 °C]				
UV	Food Grade Oil [-20 to 140°C]		VB	Syltherm XLT [-100 to 260 °C]				
UX	Silicon DC 200 [-40 to 205 °C] (Standard)		VC	Halocarbon Oil*				
Remote Mounting (With capillary of Max. Up to 6 Mtrs.)								
Specify In Meters (e.g. 1.5 = 1.5 METERS 2.0 = 2 METERS)						3Mtr.		
CAPILLARY								
PE	AISI 304 SS		PG	AISI 316 SS		XX		
Capillary Covered With Armour (Applicable with PE or PG if selected)								
PF	AISI 304 SS		PH	AISI 316 SS		PI	PVC (Ambient Temp. Max. 60°C)	XX
OPTIONS								
TB	Helium Leak Test		TC	Dry Seal Only Without Instrument		XX		
GH	Material Test Certificates*		TF	Conformity as per NACE Standard				
* Material Test Certificates Will Be Provided For Wetted Parts Only With Chemical Composition Testing. For Others, Please Consult Factory.								
Refer Datasheet EE for selection of Flushing Rings.								

**For Other Optional Items, Please Contact Factory For Delivery And Minimum Quantity Of Order.**

Note : Specifications and dimensions given in this product catalogue represents the state of engineering at the time of printing.  
Modifications may take place and materials specified may be replaced by others without prior notice.



### Special Features

- Welded diaphragm
- Most suitable for slurry & corrosive service
- Flushing ring, flange & diaphragm are
- Available in various type of ss & exotic materials

### Application

- Diaphragm seals are provided in the instruments like pressure Gauges, switches, transmitters in order to isolate the sensing Element from the main service due to its corrosive, viscous and Sedimented nature and to avoid clogging and solidification.
- These kind of seals are widely used in the viscous & corrosive services where flushing is required periodically & frequently

### Specifications

#### Standard Version ( For Flange Size 1½" And Above)

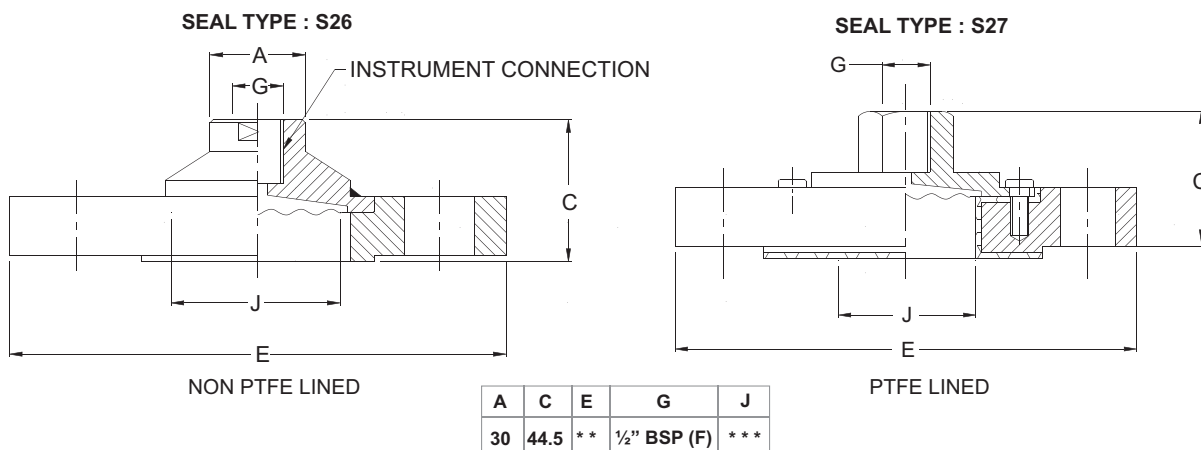
(Compatible Models : AC, AE, AH, AI, AL, AQ, BA, BE, BI, BJ & BT)

Seal type	:	S26 = -1 to 0 kg/cm <sup>2</sup> & 0 to 250 kg/cm <sup>2</sup> (Non PTFE Lined)*(Standard)
	:	S27 = -1 to 0 kg/cm <sup>2</sup> & 0 to 40 kg/cm <sup>2</sup> (PTFE Lined)*
Process temperature	:	Max. 150 °C for PTFE lined
	:	- 40 °C to 200 °C for without PTFE lined
Instrument connection	:	½" BSP (F)
Process connection	:	Flange( As per DIN/BS/ANSI/JIS), 40 NB(1½") & above
Fill fluid	:	Silicon Oil - DC 200
Flange finish	:	125-250 AARH

\* Range of selected instrument shall be suitable to flange pressure rating.

Diaphragm	:	AISI 316L SS
Top chamber	:	AISI 304 SS
Flange	:	AISI 316 SS

### Dimensions - Standard Version



\*\* As per standard flange table ANSI, DIN, BS, JIS, Etc.,

\*\*\* Diaphragm Dia. to suit Flange

**Flange Table With Ordering Codes**

**How To Select**

E.g. For flange size of 1 ½" as per BS-10 table e with raised face : C10 - A2

**A2** Raised Face

**A3** Flat Face

Flange Finish shall be 125 - 250 AARH as a standard. For other finish, please consult factory.

**As Per DIN 2527**

DN	PN	CODE	DN	PN	CODE
40	6	A41	65	6	A61
	10	A42		10	A62
	16	A43		16	A63
	25	A44		25	A64
	40	A45		40	A65
	64	A46		64	A66
	100	A47		100	A67
	160	A48		160	A68
	250	A49		250	A69
	400	A50		400	A70
50	6	A51	80	6	A71
	10	A52		10	A72
	16	A53		16	A73
	25	A54		25	A74
	40	A55		40	A75
	64	A56		64	A76
	100	A57		100	A77
	160	A58		160	A78
	250	A59		250	A79
	400	A60		400	A80

**As Per DIN 2642**

DN	PN	CODE
40	10	A95
50		A96
65		A97
80		A98

**As Per DIN 2633**

DN	PN	CODE
40	16	A86
50		A87
65		A88
80		A89

**As Per DIN 2635**

DN	PN	CODE
40	40	B05
50		B06
65		B07
80		B08

**As Per JIS - B 2210**

NOMINAL SIZE	RATING /CLASS	CODE
40A	5K	B72
	10K	B73
	40K	B74

**As Per BS - 10**

NOMINAL SIZE	TABLE	CODE
1½"	D	C09
	E	C10
	F	C11
	H	C12
	J	C13
	K	C14
2"	D	C15
	E	C16
	F	C17
	H	C18
	J	C19
	K	C20

NOMINAL SIZE	RATING /CLASS	CODE
50A	5K	B75
	10K	B76
	40K	B77
65A	5K	B78
	10K	B79
	40K	B80
80A	5K	B81
	10K	B82
	40K	B83

**As Per ANSI B 16.5**

NOMINAL SIZE	RATING /CLASS	CODE	NOMINAL SIZE	RATING /CLASS	CODE
1 ½"	150	B33	2½"	150	B45
	300	B34		300	B46
	600	B35		600	B47
	900	B36		900	B48
	1500	B37		1500	B49
	2500	B38		2500	B50
2"	150	B39	3"	150	B51
	300	B40		300	B52
	600	B41		600	B53
	900	B42		900	B54
	1500	B43		1500	B55
	2500	B44		2500	B56

NOMINAL SIZE	TABLE	CODE
2½"	D	C21
	E	C22
	F	C23
	H	C24
	J	C25
	K	C26
3"	D	C27
	E	C28
	F	C29
	H	C30
	J	C31
	K	C32

How To Order					Example
Basic Model					
Code					
Optional Extras					
[It is recommended that the MOC of Diaphragm & flange should be equivalent.]					
Seal Type					
S26 -1 to 0 kg/cm² & 0 to 250 kg/cm² (Non PTFE Lined) (Standard)*		S27 -1 to 0 kg/cm² & 0 to 40 kg/cm² (PTFE Lined)*		XXX	
* Range of selected instrument shall be suitable to flange pressure rating.					
Instrument Connection					
VM ½" NPT (F)	VL ½" BSP (F)(Standard)	VP 3/8" BSP (F)		XX	
Top Chamber					
YA AISI 316L SS	YC Carbon Steel			XX	
XY AISI 316 SS	XW AISI 304 SS (standard)				
Diaphragm (* For seal type S27 & Pressure Range 16 kg/cm² Max.) (# Range up to 21 kg/cm²)					
UQ Tantalum	UR Titanium	UP SILVER#	KE PTFE*	XX	
UL Hastelloy 'c'	UM Monel	UJ AISI 316L SS (Standard)			
Flange Material					
TK AISI 304 SS	TN Carbon Steel	UH Titanium	TM AISI 316 SS (standard)	XX	
TL AISI 316L SS	TX Monel	TT Hastelloy C	UD Tantalum		
Process Connection					
As Per DIN / BS / ANSI / JIS (select Code From Flange Table)					XXX
Protection On Wetted Parts					
VS PTFE Lining On Bottom Chamber - 2 mm Thick (Max. Up to 150 °C)					XX
VV PTFE Protection For Diaphragm (Max. Up to 150 °C) (Suitable for Pressure Ranges only)					
VZ PTFE Coating On Diaphragm (Max. Up to 315 °C)					
Filling Fluids (* Consult factory for specifications, price and delivery.)					
US Flurolube 4.2 [-45 to 175 °C]	UY Silicon DC 704 [10 to 337 °C]				XX
UT Flurolube 6.3 [-40 to 235 °C]	UZ Silicon DC 710 [7 to 371 °C]				
UU Flurolube FS-5 [-28 to 148 °C]	VA Syltherm 800 [-40 to 315 °C]				
UV Food Grade Oil [-20 to 140 °C]	VB Syltherm XLT [-100 to 260 °C]				
UX Silicon DC 200 [-40 to 205 °C] (Standard)	VC Halocarbon Oil*				
Remote Mounting (With capillary of Max. Up to 6 Mtrs.)					3Mtr.
Specify In Meters (e.g. 1.5 = 1.5 METERS 2.0 = 2 METERS)					
Capillary					
PE AISI 304 SS	PG AISI 316 SS				XX
Capillary Covered With Armour (applicable With PE Or PG If Selected)					
PF AISI 304 SS	PH AISI 316 SS	PI PVC (Ambient Temp. Max. 60°C)			XX
Options					
TB Helium Leak Test	TC Dry Seal Only Without Instrument	GH Material Test Certificates*			XX
TF Conformity as per NACE Standard					
* Material Test Certificates Will Be Provided For Wetted Parts Only With Chemical Composition Testing. For Others, Please Consult Factory.					
Refer Datasheet EE for selection of Flushing Rings.					
For Other Optional Items, Please Contact Factory For Delivery And Minimum Quantity Of Order.					



### Special Features

- All SS 316 construction
- Deal for slurry / high viscous fluids
- Flange & diaphragm are available in various type of SS & exotic materials

### Application

- Diaphragm seals are provided in the instruments like pressure gauges, switches, transmitters in order to isolate the sensing element from the main service due to its corrosive, viscous and sedimented nature and to avoid clogging and solidification
- These kind of seals are widely used in the viscous & corrosive services where flushing is required periodically & frequently

### Specifications

#### Standard Version (Compatible Model : AL (NS 100 mm & 150 mm)

Note: Pressure gauge will be provided with internal system of NS 63 mm

Range	:	1 kg/cm <sup>2</sup> to 250 kg/cm <sup>2</sup> *
Process temperature	:	-40°C to 200°C or as per fill fluid
Instrument connection	:	½" BSP (F)
Process connection	:	Flange (Refer table)
Flange finish	:	Finish 125-250 AARH

\* Range of selected instrument shall be suitable to flange pressure rating.

Diaphragm	:	AISI 316L SS
Body	:	AISI 316 SS
Flange	:	AISI 316 SS
Extension	:	50 mm (other extension on request)
Fill fluid	:	Silicon Oil - DC 200

### Range - Flange Table With Ordering Codes

#### How To Select

e.g. For flange size of 1 " as per BS-10 Table E with raised face : B97 - A2

**A2** Raised Face

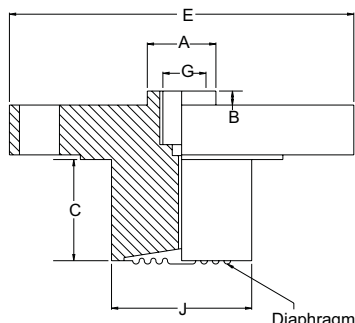
**A3** Flat Face

Flange Finish shall be 125 - 250 AARH as a standard. For other finish, please consult factory.

#### As Per ANSI B 16.5

NOMINAL SIZE	RATING/CLASS	CODE	NOMINAL SIZE	RATING/CLASS	CODE	NOMINAL SIZE	RATING/CLASS	CODE
½"	150	B09	1½"	150	B33	2½"	150	B45
	300	B10		300	B34		300	B46
	600	B11		600	B35		600	B47
	900	B12		900	B36		900	B48
	1500	B13		1500	B37		1500	B49
	2500	B14		2500	B38		2500	B50
1"	150	B21	2"	150	B39	3"	150	B51
	300	B22		300	B40		300	B52
	600	B23		600	B41		600	B53
	900	B24		900	B42		900	B54
	1500	B25		1500	B43		1500	B55
	2500	B26		2500	B44		2500	B56

## Dimensions - Standard Version



A	B	C	E	G	J
30	8	50*	**	1/2" BSP(F)	***

Notes : • Drawings are not to scale.  
• All Dimensions are in mm.

\* or as per customer requirement

\*\* As per standard BLRF flange table ANSI, DIN, BS, JIS Etc.

\*\*\* 40 / 53 / 63 / 70 mm (suitable to range & as per flange pressure rating.)

## How To Order

## Example

### Basic Model

### Code

### Optional Extras

[It is recommended that the MOC of Diaphragm, Body & Flange should be equivalent.]

### Instrument Connection

**VM** 1/2" NPT (F)      **VL** 1/2" BSP (F) (Standard)      **VP** 3/8" BSP (F)

### Diaphragm

**UJ** AISI 316L SS (Standard)      **UM** MONEL      **UL** HASTELLOY 'C'

### Body

**CN** Monel      **CO** Hastelloy 'C'      **CM** AISI 316L SS      **CL** AISI 316 SS (Standard)

### Body Length (Standard: 50 mm & Max. Up to 200 mm)

Specify IN mm (e.g. 50 mm, 100 mm, 150 mm & 200 mm)

### Process Connection

(select Code From Flange Table)

### Flange Material

**TX** Monel      **TT** Hastelloy C      **TL** AISI 316L SS      **TM** AISI 316 SS (Standard)

### Filling Fluids (\* Consult factory for specifications, price and delivery.)

<b>US</b> Flurolube 4.2 [-45 to 175 °C]	<b>UY</b> Silicon DC 704 [10 to 337 °C]
<b>UT</b> Flurolube 6.3 [-40 to 235 °C]	<b>UZ</b> Silicon DC 710 [7 to 371 °C]
<b>UU</b> Flurolube FS-5 [-28 to 148 °C]	<b>VA</b> Syltherm 800 [-40 to 315 °C]
<b>UV</b> Food Grade Oil [-20 to 140 °C]	<b>VB</b> Syltherm XLT [-100 to 260 °C]
<b>UX</b> Silicon DC 200 [-40 to 205 °C] (Standard)	<b>VC</b> Halocarbon Oil*

### Remote Mounting (With capillary of Max. Up to 6 Mtrs.)

Specify In Meters (e.g. 1.5 = 1.5 Meters 2.0 = 2 Meters)

### Capillary

**PE** AISI 304 SS      **PG** AISI 316 SS

Capillary Covered With Armour (Applicable with PE or PG if selected)

**PF** AISI 304 SS      **PH** AISI 316 SS      **PI** PVC (Ambient Temp. Max. 60°C)

### Options

**TB** Helium Leak Test      **TC** Dry Seal Only Without Instrument      **GH** Material Test Certificates\*

\* Material Test Certificates Will Be Provided For Wetted Parts Only With Chemical Composition Testing. For Others, Please Consult Factory.

For Other Optional Items, Please Contact Factory For Delivery And Minimum Quantity Of Order.

Note : Specifications and dimensions given in this product catalogue represents the state of engineering at the time of printing.

Modifications may take place and materials specified may be replaced by others without prior notice.





### Special Features

- Laser welded diaphragm
- Suitable for slurry & high viscous service
- Easy to clean
- Flush fitment in pipeline
- Flushing ring, flange & diaphragm are available in various type of SS & exotic materials.

### Application

- Diaphragm seals are provided in the instruments like pressure gauges, switches, transmitters in order to isolate the sensing element from the main service due to its corrosive, viscous and sedimented nature and to avoid clogging and solidification
- These kind of seals are widely used in the viscous & corrosive services where flushing is required periodically & frequently

### Specifications

Standard Version

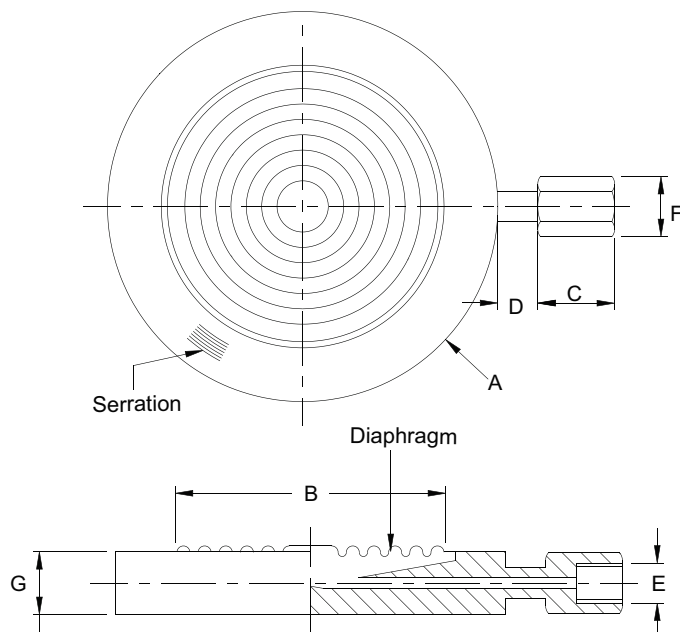
(Compatible models : AC, AE, AH, AI, AL & BE)

Range	:	1 kg/cm <sup>2</sup> to 160 kg/cm <sup>2</sup> *
Process temperature	:	-40°C to 200°C or as per fill fluid
Instrument connection	:	1/4" NPT (F)
Process connection	:	Flange (As per ANSI/BS/DIN/JIS), Suitable for 2" & above
Flange finish	:	Finish 125-250 AARH

\* Range of selected instrument shall be suitable to flange pressure rating.

Diaphragm	:	AISI 316L SS
Pan Cake Body / Flange	:	AISI 316 SS
Fill Fluid	:	Silicon Oil - DC 200

### Dimensions



A	B	C	D	E	F	G
**	***	20	*	1/4" NPT(F)	17 HEX.	22

\* To suit flange raised face

\*\* 2" & above Flanges as per ANSI, BS, DIN, JIS etc.

\*\*\* Diaphragm size as per pressure range

Notes : • Drawings are not to scale.

• All Dimensions are in mm.

## Range

### Flange Connection Codes

#### As Per DIN 2527

DN	PN	CODE
50	6	A51
	10	A52
	16	A53
	25	A54
	40	A55
	64	A56
	100	A57
	160	A58
	250	A59
400	A60	

DN	PN	CODE
80	6	A71
	10	A72
	16	A73
	25	A74
	40	A75
	64	A76
	100	A77
	160	A78
	250	A79
400	A80	

#### As Per ANSI B 16.5

NOMINAL SIZE	RATING /CLASS	CODE
2"	150	B39
	300	B40
	600	B41
	900	B42
	1500	B43
	2500	B44
3"	150	B51
	300	B52
	600	B53
	900	B54
	1500	B55
	2500	B56

#### As Per BS - 10

NOMINAL SIZE	TABLE	CODE
2"	D	C15
	E	C16
	F	C17
	H	C18
	J	C19
	K	C20
3"	D	C27
	E	C28
	F	C29
	H	C30
	J	C31
	K	C32

#### As Per JIS - B 2210

NOMINAL SIZE	RATING /CLASS	CODE
50A	5K	B75
	10K	B76
	40K	B77
80A	5K	B81
	10K	B82
	40K	B83

#### As Per DIN 2633

DN	PN	CODE
50	16	A87
80		A89

#### As Per DIN 2642

DN	PN	CODE
50	10	A96
80		A98

#### As Per DIN 2635

DN	PN	CODE
50	40	B06
80		B08

Raised face : **A2**

Flat face : **A3**

## How to Order

## Example

E.g. For flange size of 2" AS per BS-10 table E with raised face : C16 - A2

Note : Flange finish will be 125-250 AARH for other finish, please specify in order

### Basic Model

### Code

Optional Extras [It is recommended that the MOC of diaphragm should be equivalent.]

### Diaphragm

<b>UJ</b>	AISI 316L SS (Standard)	<b>UL</b>	Hastelloy 'C'	<b>UR</b>	Titanium	<b>UW</b>	Inconel 600
<b>UM</b>	Monel	<b>UQ</b>	Tantalum	<b>UN</b>	Nickel		

### Pan Cake Body / Flange (Suitable for 2" or 3" DIN/ANSI/BS/JIS Flanges)

<b>ZR</b>	For 2" flange size - AISI 316L SS
<b>ZS</b>	For 3" flange size - AISI 316L SS
<b>KH</b>	For 2" flange SIZE - Hastelloy C
<b>KI</b>	For 3" flange SIZE - Hastelloy C

### Instrument Connection

<b>VN</b>	1/4" BSP (F)
<b>VO</b>	1/4" NPT (F) (Standard)
<b>VP</b>	3/8" BSP (F)

### Flange Material

<b>TM</b>	AISI 316 SS (Standard)
<b>TL</b>	AISI 316L SS
<b>TT</b>	Hastelloy C

### Protection On Wetted Parts

<b>VZ</b>	PTFE coating on diaphragm (Max. up to 315 °C)
-----------	---

### Filling fluids (\* Consult factory for specifications, price and delivery.)

<b>US</b>	Fluorolube 4.2 [-45 to 175 °C]	<b>UY</b>	Silicon DC 704 [10 to 337 °C]
<b>UT</b>	Fluorolube 6.3 [-40 to 235 °C]	<b>UZ</b>	Silicon DC 710 [7 to 371 °C]
<b>UU</b>	Fluorolube FS-5 [-28 to 148 °C]	<b>VA</b>	Syltherm 800 [-40 to 315 °C]
<b>UV</b>	Food grade oil [-20 to 140 °C]	<b>VB</b>	Syltherm XLT [-100 to 260 °C]
<b>UX</b>	Silicon DC 200 [-40 to 205 °C] (Standard)	<b>VC</b>	Halocarbon oil*

DM

XX

XX

XX

XX

XX

XX

How to Order	Example
<b>Remote Mounting (With capillary of max. up to 2 mtrs.)</b>	
Specify in meters (e.g. 1.5 = 1.5 meters 2.0 = 2 meters)	1 Mtr.
<b>Capillary</b>	
<b>PE</b> AISI 304 SS	
<b>PG</b> AISI 316 SS	XX
<b>Capillary Covered with Armour (Applicable with PE or PG if selected)</b>	
<b>PF</b> AISI 304 SS	
<b>PH</b> AISI 316 SS	XX
<b>PI</b> PVC (Ambient Temp. Max. 60°C)	
<b>Options</b>	
<b>TB</b> Helium leak test	
<b>TC</b> Dry seal only without instrument	XX
<b>GH</b> Material test certificates*	
***Material test certificates will be provided for wetted parts only with chemical composition testing. For others, please consult factory. Refer datasheet EE for selection of flushing rings	

For other optional items, please contact factory for delivery and minimum quantity of order.

Note : Specifications and dimensions given in this product catalogue represents the state of engineering at the time of printing. Modifications may take place and materials specified may be replaced by others without prior notice.



### Special Features

- Ideal for pulp industry
- Laser welded flush diaphragm
- Continuous duty
- Easy to clean
- Available with anti vibration spring (optional)

### Application

- Diaphragm seals are provided in the instruments like pressure gauges, switches, transmitters in order to isolate the sensing element from the main service due to its corrosive, viscous and sedimented nature and to avoid clogging and solidification
- These kind of seals are widely used in the viscous & corrosive services where flushing is required periodically & frequently

### Specifications

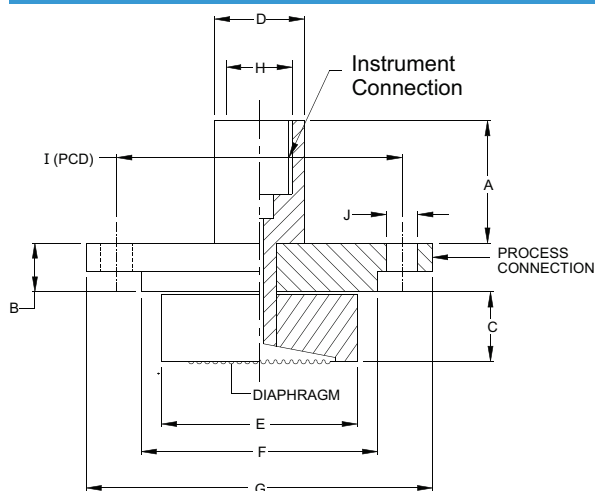
Standard Version

(Compatible models : AL( NS 100 mm & 150 mm )

Range	:	1 kg/cm <sup>2</sup> to 40 kg/cm <sup>2</sup>
Process temperature	:	-40°C to 200°C or as per fill fluid
Instrument connection	:	½" BSP (F)
Process connection	:	As per diagram below
Mounting	:	Direct (without spring & capillary)

Diaphragm	:	AISI 316L SS
Body & floating ring	:	AISI 316 SS
Fill fluid	:	Silicon oil - DC 200

### Dimensions

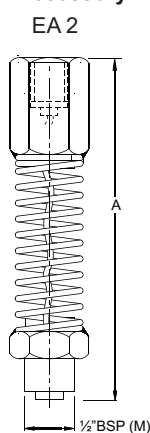


A	B	C	D	E	F	G	H	I	J	Approx. Wt. #
30	12	15	25 SQ	48	58	85	½" BSP (F)	70	7	600.0

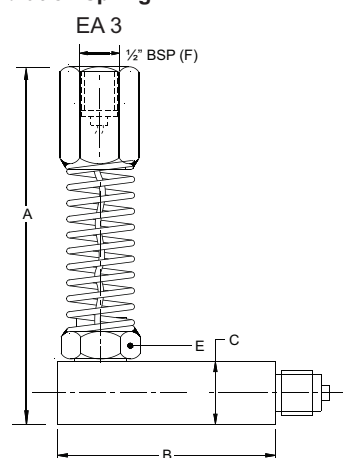
(# Weight in grams with box for standard model)

Notes : • Drawings are not to scale. • All Dimensions are in mm.


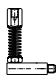
### Accessory : Anti vibration spring



A	B	C	E
120	77	25	25



Mounting	EA 2 / EA 3
Spring & Capillary	AISI 304 SS
Body & Connection	AISI 316 SS

How To Order							Example	
Basic Model							XX	
Code								
Optional Extras								
Instrument Connection								
VO	1/4" NPT (F)	VP	3/8" BSP (F)	VL	½" BSP (F)(Standard)	VM	½" NPT (F)	XX
Anti Vibration Spring (Select if required)							XXX	
	EA 2	Bottom mounting			EA 3	90° angular mounting (back mounting)		
Body & Floating Ring							XX	
CL	AISI 316 SS (Standard)			CM	AISI 316L SS			
Diaphragm							XX	
UJ	AISI 316L SS (Standard)							
Filling Fluids (* Consult factory for specifications, price and delivery)							XX	
US	Flurolube 4.2 [-45 to 175 °C]			UY	Silicon DC 704 [10 to 337 °C]			
UT	Flurolube 6.3 [-40 to 235 °C]			UZ	Silicon DC 710 [7 to 371 °C]			
UU	Flurolube FS-5 [-28 to 148 °C]			VA	Syltherm 800 [-40 to 315 °C]			
UV	Food grade oil [-20 to 140 °C]			VB	Syltherm XLT [-100 to 260 °C]			
UX	Silicon DC 200 [-40 to 205 °C] (Standard)			VC	Halocarbon oil*			
Remote Mounting (With capillary of max. up to 3 mtrs.)							1Mtr.	
Specify in meters (e.g. 1.5 = 1.5 Meters 2.0 = 2 Meters)								
Note: Remote mounting is not applicable if EA 2 or EA 3 options selected.								
Capillary							XX	
PE	AISI 304 SS		PG	AISI 316 SS				
Capillary Covered with Armour (Applicable with PE or PG if selected)							XX	
PF	AISI 304 SS		PH	AISI 316 SS		PI		PVC (Ambient temp. Max. 60°C)
Options							XX	
TB	Helium leak test			GH	Material test certificates*			
TC	Dry seal only without instrument			KF	Special connection (Please provide drawings)			

\*\*\*Material test certificates will be provided for wetted parts only with chemical composition testing.

For others, please consult factory.

For other optional items, please contact factory for delivery and minimum quantity of order.

Note : Specifications and dimensions given in this product catalogue represents the state of engineering at the time of printing.

Modifications may take place and materials specified may be replaced by others without prior notice.